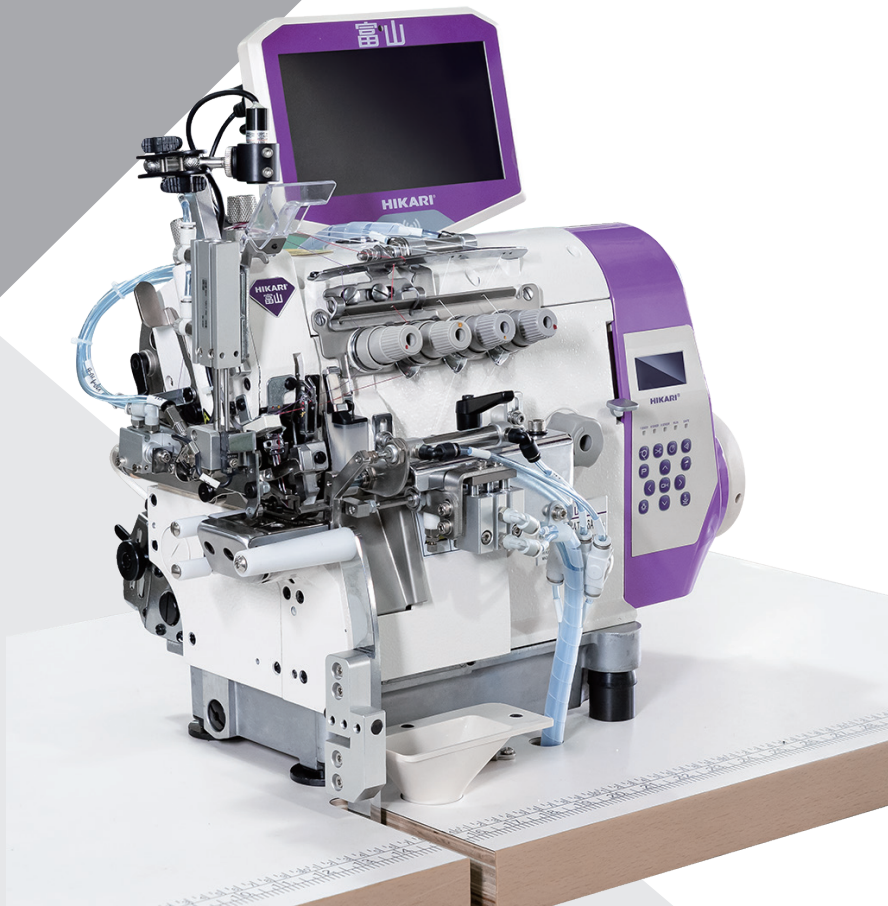


HIKARI® 富山

HSAT-K6A

自动上螺纹袖口/脚口机

AUTOMATIC THREADING CUFF
TROUSERS LEG MACHINES



不依赖熟练工 轻松上袖口/脚口

Cuffs/feet opening can be easily applied
without relying on skilled workers

痛点VS价值买点

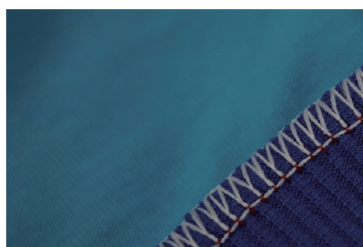
PAIN POINTS VS BUY POINTS

- 01 螺纹制品均匀美观**
Threaded products are uniform and beautiful.
- 02 新人上手快，降低员工对缝纫技能的依赖**
Easy for novices to operate, Reduce operator dependence on sewing skills.

尚有价值魅力

MORE VALUES

- 01 自动倒股功能：侧缝自动倒向，满足高品质要求**
Automatic reverse position function: the side seam is automatically reversed to meet the high quality requirements.
- 02 股位对缝功能：激光定位线配合缝位压股装置，提升对缝一致性**
Seam alignment function: the laser positioning line is combined with the seam position pressing device to improve the consistency of the alignment seam.
- 03 一键换码 快速切换 快捷方便**
Change size with one click, quick switch, fast & convenient.
- 04 自动模式与人工模式可随心切换**
Automatic mode and manual mode can be switched at will.
- 05 配置富山IoT功能，实现设备网络联接功能，助力企业打造数字化工厂**
Configure HIKARI IOT functions, implement device network connection function. Help customer build digital factories.



													
HSAT-K6A	DCx27 #9-#12	2	4	2	2x4	0.7-3.8	0.8-18	7	3-9cm	23-50cm(周长)	4500	1380x780x1290mm	

HIKARI® 富山

上海富山精密机械科技有限公司

HIKARI(SHANGHAI)PRECISE MACHINERY SCIENCE & TECHNOLOGY CO.,LTD.

上海市金山区朱泾工业区中达路800号
NO.800.ZHONGDA ROAD, JINSHAN ZONE,
SHANGHAI, CHINA

电话/Tel:021-67311111
传真/Fax:021-67311311
邮箱/E-mail:hikari@chinahikari.com



facebook



抖音