

HW800TC系列 computerized direct drive multi-needle machine
电脑直驱多针一体机

零件手册

PARTS BOOK

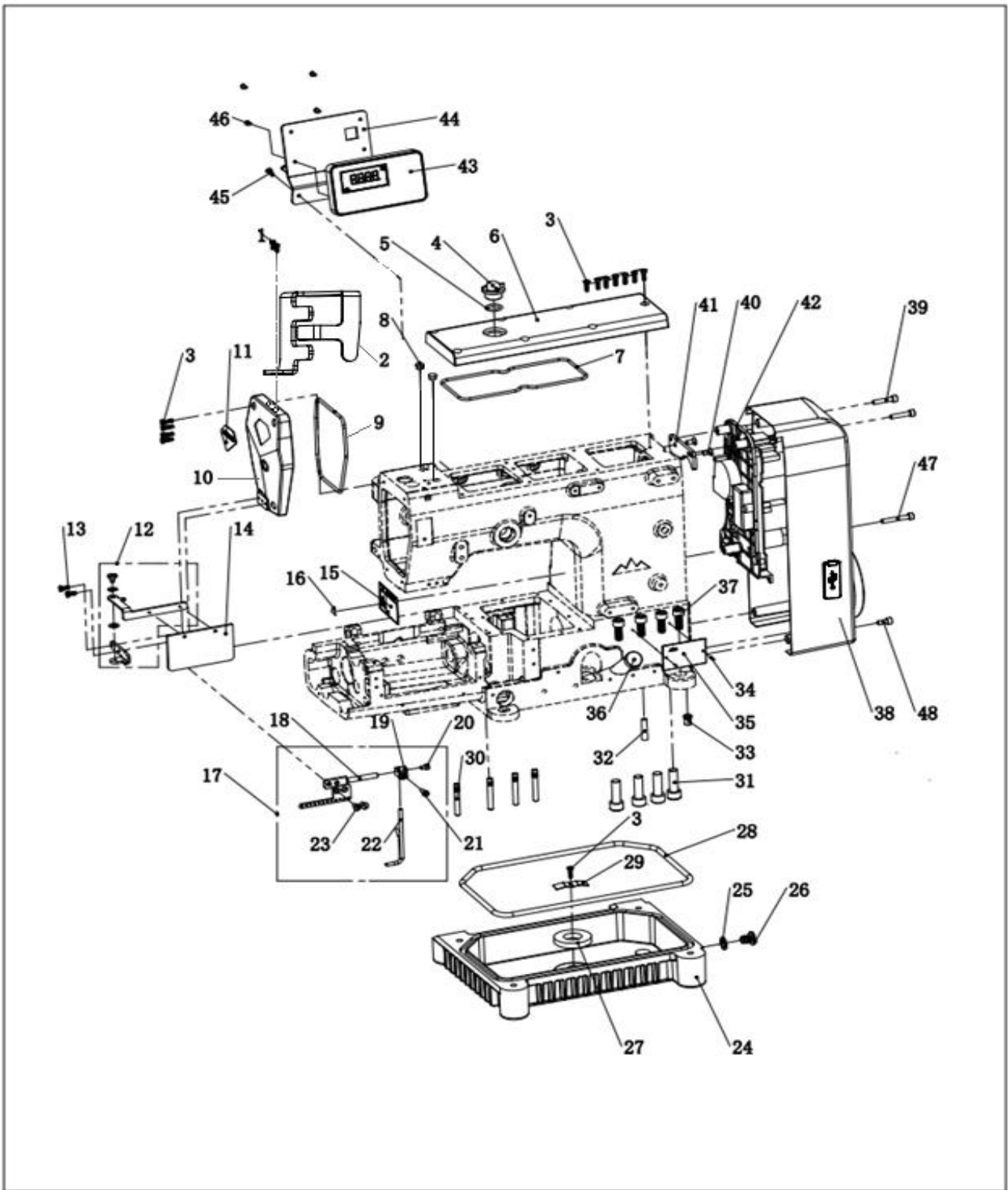


通过 ISO9001:2008
质量管理体系认证

目 录

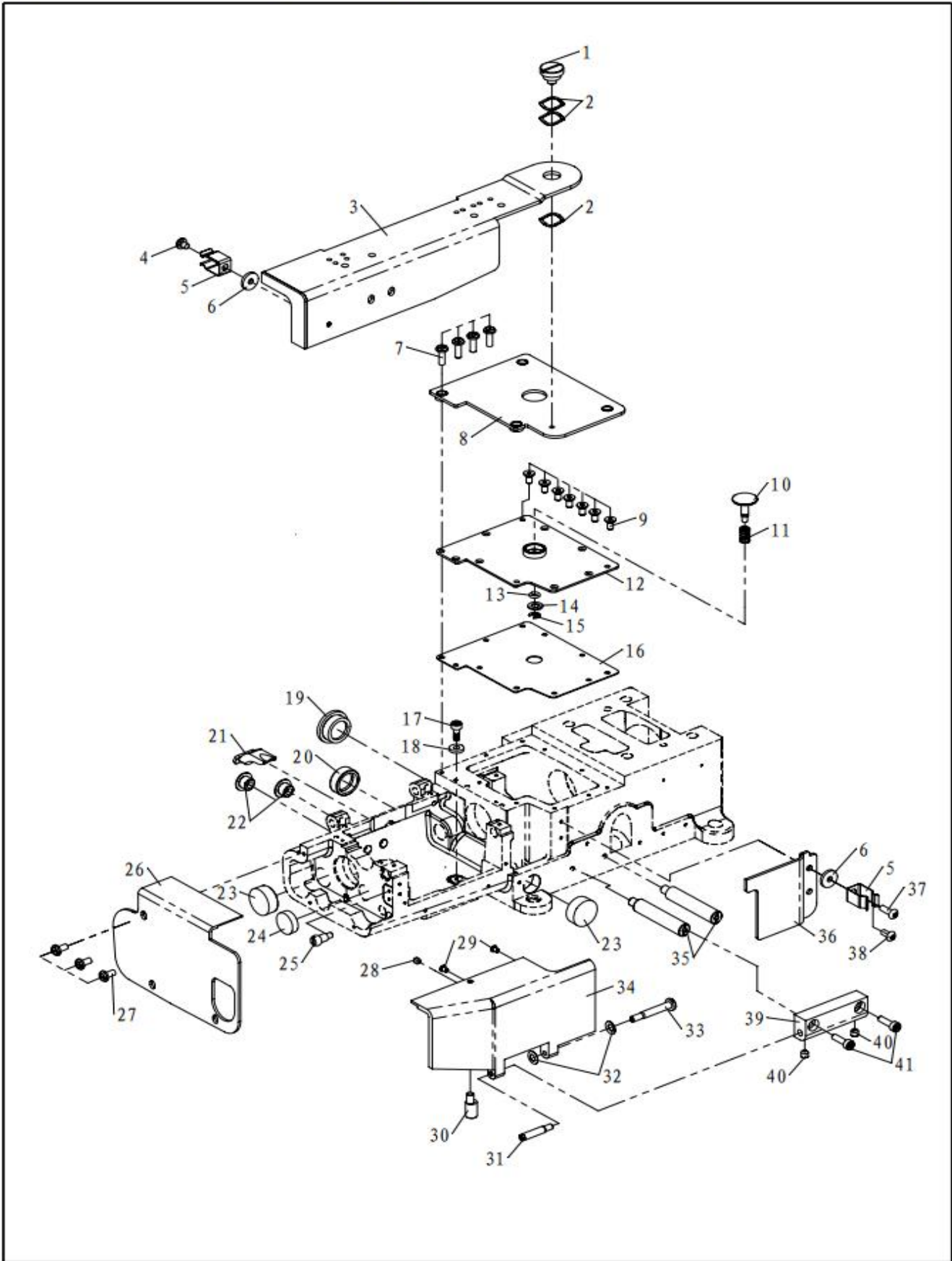
1. 机壳部件-1	FRAME ASSEMBLY-1.....1
2. 机壳部件-2	FRAME ASSEMBLY-2.....3
3. 过线部件	THREAD TENSION MECHANISM.....5
4. 轴套部件1	BUSHING..... 7
5. 下轴部件	CRANKSHAFT MECHANISM.....9
6. 上轴部件	CRANKSHAFT MECHANISM..... 11
7. 针杆部件	NEEDLE BAR MECHANISM..... 13
8. 压料部件	PRESSER FOOT MECHANISM..... 15
9. 送料部件	FEED MECHANISM..... 17
10. 下轴电机部件	MOTOR MECHANISM.....19
11. 弯针驱动部件	LOOPER MECHANISM..... 21
12. 拖轮驱动部件	REAR PULLER MECHANISM.....23
13. 拖轮部件	REAR MECHANISM..... 25
14. 针板部件	KNIFE MECHANISM.....27
15. 夹线器部件	THREAD TENSION MECHANISM..... 29
16. 润滑部件	LUBRICATION MECHANISM.....31
17. 线架部件	THREAD TENSION MECHANISM..... 33
18. 气路部件	WIRING AND PIPING.....35
19. 四针夹线器部件	THREAD TENSION MECHANISM..... 37
20. 附件	ACCESSORIES.....39
21. 不同规格零部件一览表	DIFFERENT PARTS LIST.....41

01. 机壳部件-1 FRAME ASSEMBLY-1



01. 机壳部件-1 FRAME ASSEMBLY-1

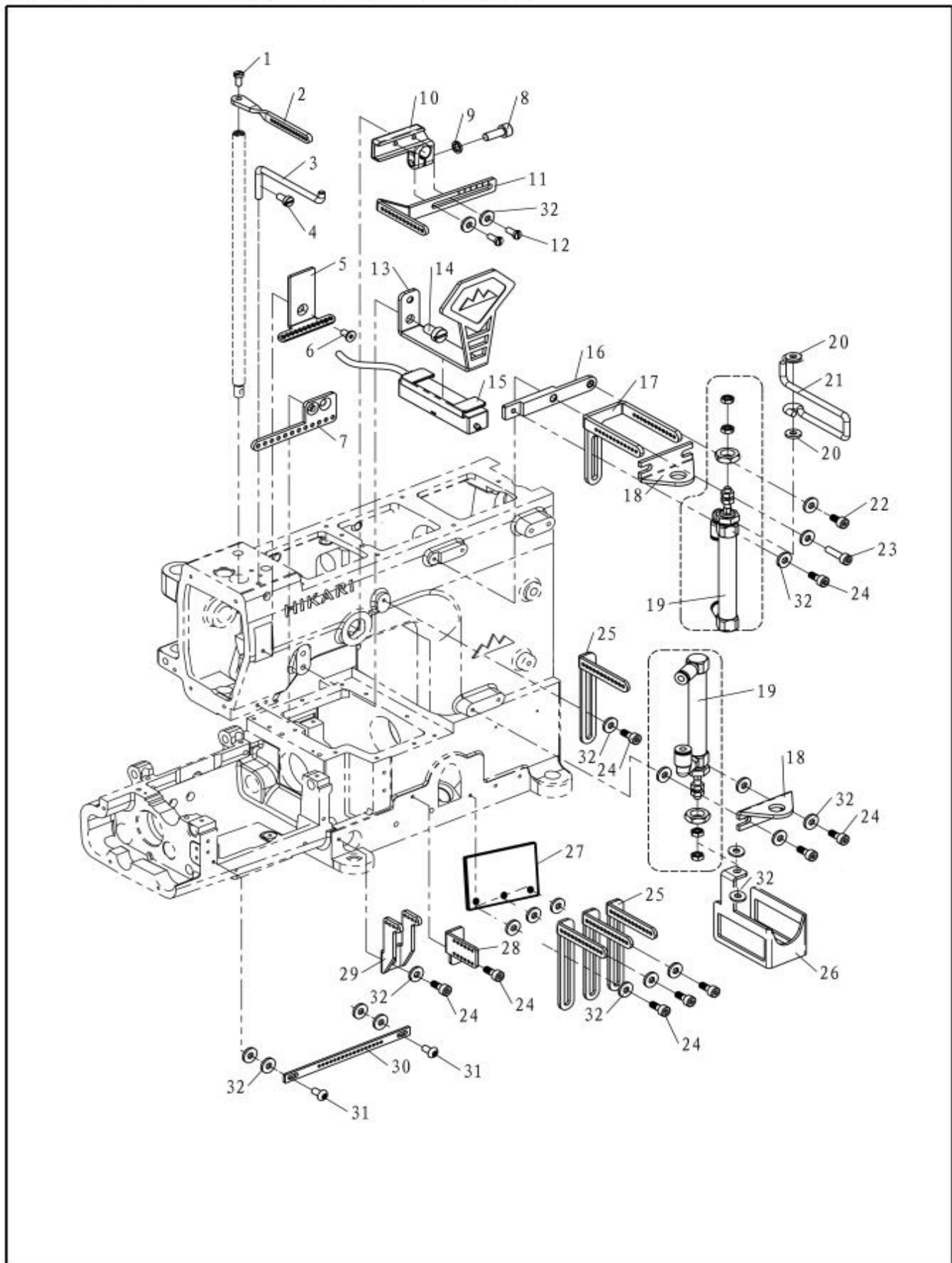
序号	图号	名称	NAME OF PARTS	数量
1	01-504000821-1	开槽盘头螺钉 M4×8	SCREW	2
2	331.01-04	针杆护罩	NEEDLE BAR COVER	1
3	01-504001221-1	开槽盘头螺钉 M4×12	SCREW	12
4	101.09-01	视油窗	OIL SIGHT WINDOW	1
5	12-190265	O型圈19×2.65	O-RING	1
6	331.01-03	上盖	TOP COVER	1
7	331.01-02	上盖油封	GASKET	1
8	22-09403012	橡胶塞	PLUG	3
9	331.01-05	油封	GASKET	1
10	331.01-06	面板	HEAD COVER	1
11	H0-001	面板贴钻石形(紫色)	MARK	1
12	331.01-08	护目镜组件	EYE GUARD ASM.	1
13	01-504001021-1	开槽圆柱头螺钉 M4×10	SCREW	2
14	331.01-11	护目镜	EYE GUARD	1
15	101.01-13	安全标示B	SAFETY MARK B	1
16	201.02-10	安全标示A	SAFETY MARK A	1
17	331.01-14A	吹线组件	THREAD BLOW ASM.	1
18	331.01-14-01	吹线管定位杆	GUIDE	1
19	331.01-14-02	吹线管夹	BRACKET	1
20	01-504000624-1	内六角圆柱头螺钉 M4×6	SCREW	1
21	01-504001024-1	内六角圆柱头螺钉 M4×10	SCREW	1
22	331.01-14-03	吹线管	PIPE	1
23	01-104001021-1	开槽沉头螺I M4×10	SCREW	2
24	331.01-21	油盘	OIL RESERVOIR	1
25	201.15-01-02	放油螺钉油封	O-RING	1
26	201.15-01-03	放油螺钉 SM3/8"×28	SCREW	1
27	331.01-20	磁铁	MAGNET	1
28	331.01-19	油盘油封	GASKET	1
29	331.01-18	磁铁压板	MAGNET FIX PLATE	1
30	331.01-15	机壳支柱	SUPPORTING BAR	4
31	01-510003024-1	内六角圆柱头螺钉 M10×30	SCREW	4
32	16-3060301-5	圆锥销6×30	PIN	1
33	351.01-01-03	定位销	PIN	1
34	17-3200500-5	标牌铆钉	RIVET	2
35	H0-004	综合型号牌(紫色)	TYPE PLATE	1
36	331.01-16	油位窗	OIL SCALE PLATE	1
37	01-508002024-1	内六角圆柱头螺钉 M8×20	SCREW	4
38	CB-35N-02	电控护罩	ELECTRIC CONTROL COVER	1
39	01-505003524-1	内六角圆柱头螺钉 M5X35	SCREW	5
40	01-205000821-1	一字槽半沉头螺钉 M5X8	SCREW	2
41	336.06-05	连接板HW800TC	CONNECTING PLATE	1
42	EB-34N-00	电控主板	ELECTRIC CONTROL PLATE	1
43	CB-35-D-00	面板组件	FACE PLATE ASM.	1
44	CP35-02-01	操作面板支架	PLATE	1
45	01-404001023-1	螺钉	SCREW	2
46	01-503000821-1	螺钉	SCREW	4



2. 机壳部件-2

FRAME ASSEMBLY-2

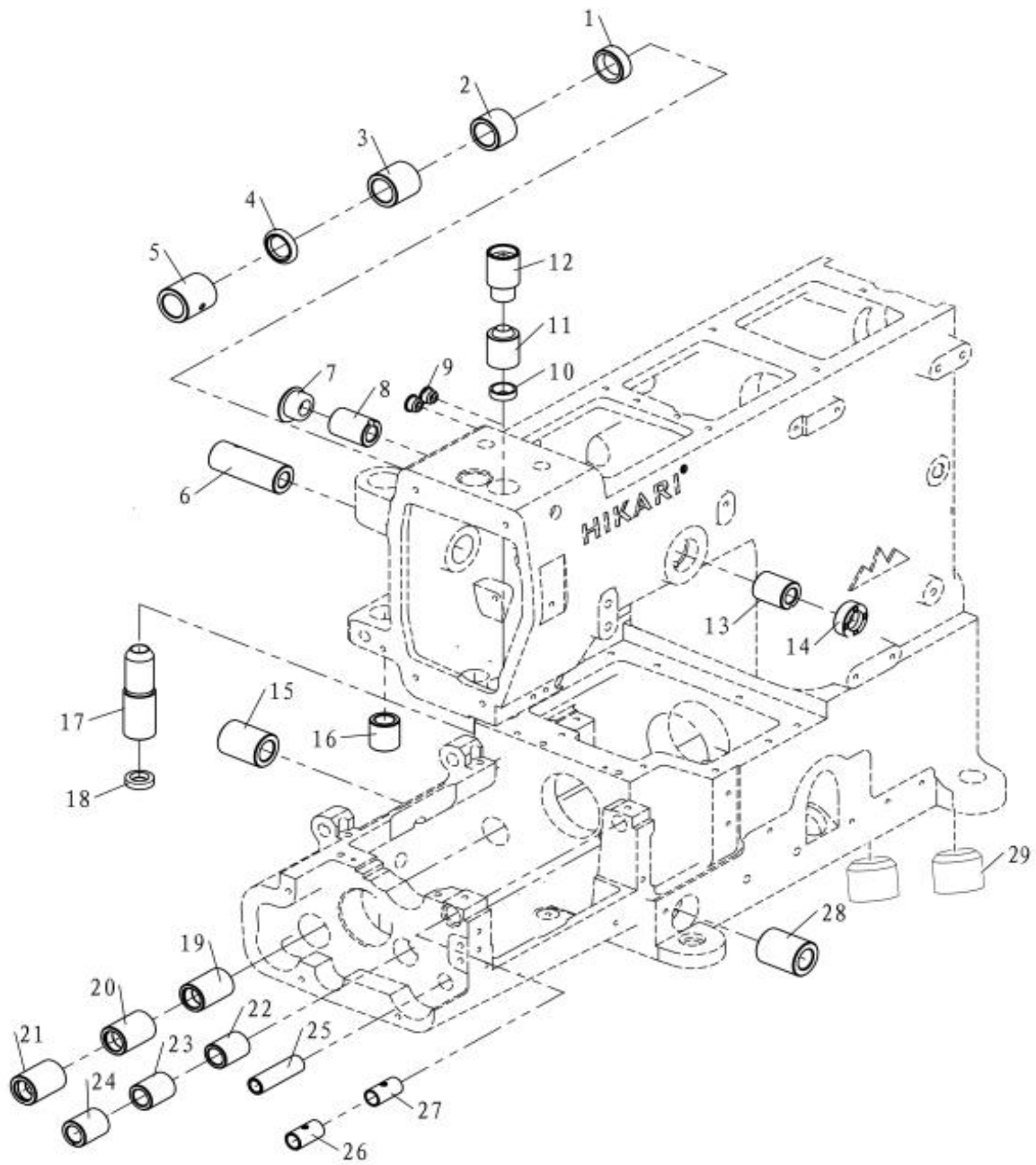
序号	图 号	名 称	NAME OF PARTS	数量
1	331.02-03	下轴外盖轴位螺钉	SCREW	1
2	08-1300317-1	波型挡圈13	SCREW	3
3	331.02-04A	前盖板	FRONT PLATE COVER	1
4	01-504000724-1	内六角槽圆柱头螺钉M4×7	SCREW	1
5	351.03-15	固定卡簧	SPRING	2
6	05-043201350-1	平垫圈	WASHER	2
7	01-504001221-1	开槽盘头螺I M4×12	SCREW	4
8	331.02-06	上盖板	UPPER COVER	1
9	01-104000824-1	内六角沉头螺钉 M4×8	SCREW	7
10	331.02-07-01	调针距按钮	PUSH BOTTON	1
11	331.02-07-02	针距调节按钮复位簧	SPRING	1
12	331.02-07-03	调针距安装板	COVER	1
13	12-038180	O型圈3.8×1.8	O-RING	1
14	05-056101000-4	平垫圈	WASHER	1
15	06-0350608-1	E型挡圈3.5	E-RING	1
16	331.02-08	调针距安装板垫	GASKET	1
17	01-504001024-1	内六角圆柱头螺钉 M4×10	SCREW	1
18	05-043200900-1	垫片	WASHER	1
19	22-20809024	橡胶塞	PLUG	1
20	22-20007000	橡胶塞	PLUG	1
21	331.02-09A	异型孔塞	PLUG	1
22	22-09403012	橡胶塞	PLUG	2
23	22-22008000	橡胶塞	PLUG	2
24	22-17405000	橡胶塞	PLUG	1
25	331.02-10	锁簧球螺钉	SCREW	1
26	331.02-11	底板左端罩	FRONT COVER	1
27	01-504000821-1	开槽盘头螺I M4×8	SCREW	3
28	01-804000414-1	内六角凹端紧定螺钉 M4×4	SCREW	1
29	331.02-12	橡胶缓冲垫	CUSHION RUBBER	2
30	331.02-13	前盖销	PIN	1
31	331.02-14A	铰链左螺钉销	PIN	1
32	09-0520309-1	碟形弹簧	SPRING	2
33	331.02-15	铰链右螺钉销	PIN	1
34	331.02-16	前盖体	FRONT COVER	1
35	331.02-17	前盖长轴螺钉	SCREW	2
36	331.02-18	挡片	OIL FENCE	1
37	01-504001221-1	一字槽圆柱头螺钉M4×12	SCREW	1
38	01-304000824-1	内六角平圆头螺钉 M4×8	SCREW	1
39	331.02-19	铰链	HINGE	1
40	01-805000514-1	内六角凹端紧定螺钉 M5×5	SCREW	2
41	01-504001424-1	内六角圆柱头螺钉 M4×14	SCREW	2



03. 过线部件 THREAD TENSION MECHANISM

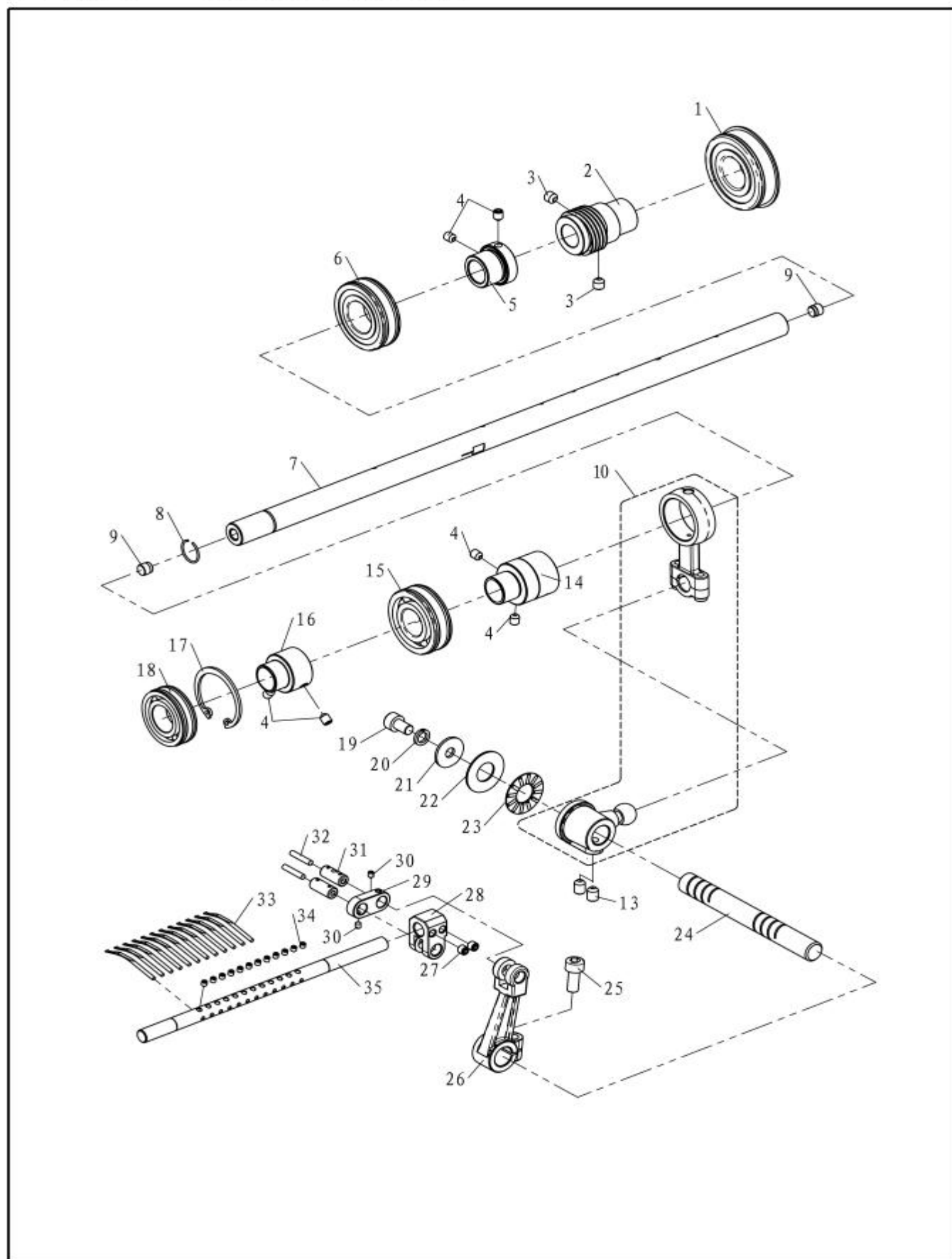
序号	图 号	名 称	NAME OF PARTS	数量
1	02-509401021-1	一字槽圆柱头螺钉SM9/64"×40×10	SCREW	1
2	331.03-01	针杆导线	THREAD GUIDE	1
3	331.03-18	针线导架	THREAD GUIDE	1
4	01-504000821-1	开槽圆柱头螺 M4×8	SCREW	1
5	331.03-02	导线	THREAD GUIDE	1
6	01-104000824-1	内六角沉头螺钉 M4×8	SCREW	1
7	331.03-03	针杆下导线	THREAD GUIDE	1
8	01-505001424-1	内六角圆柱头螺钉 M5×14	SCREW	1
9	07-0521313-1	弹簧垫圈5	SPRING WASHER	1
10	331.03-04	挑线杆座	BRACKET	1
11	331.03-05	挑线杆	THREAD GUIDE	1
12	01-535000821-1	开槽圆柱头螺钉 M3.5×8	SCREW	2
13	331.03-06	挑线护板	COVER	1
14	01-506001021-1	开槽圆柱头螺钉 M6×10	SCREW	1
15	JL-35 (A)	照明灯组件	LIGHT SAM.	1
16	331.03-08	过线夹板	BRACKET	1
17	331.03-09	过线架	THREAD GUIDE	1
18	331.03-17	输线气缸架	BRACKET	2
19	331.03-10A	松线气缸	AIR CYLINDER ASM.	2
20	05-043101203-5	平垫片4.3×1.0×12	WASHER	2
21	331.03-11	缓线钩	BAR	1
22	01-504000824-1	内六角圆柱头螺钉 M4×8	SCREW	1
23	01-504001424-1	内六角槽圆柱头螺钉M4×14	SCREW	1
24	01-504001024-1	内六角圆柱头螺钉 M4×10	SCREW	9
25	331.03-12	过线臂	THREAD GUIDE	4
26	331.03-13	下松线压板	PLATE	1
27	05-043201350-1	平垫片	WASHER	3
28	331.03-14	导线板	THREAD GUIDE	1
29	331.03-15	紧线杆导线	THREAD GUIDE	1
30	331.03-16	弯针导线	THREAD GUIDE	1
31	01-304000824-1	内六角平圆头螺钉 M4×8	SCREW	2
32	05-043080900-3	平垫片4.3×0.8×9	WASHER	21

04. 轴套部件 BUSHING



04. 轴套部件 BUSHING

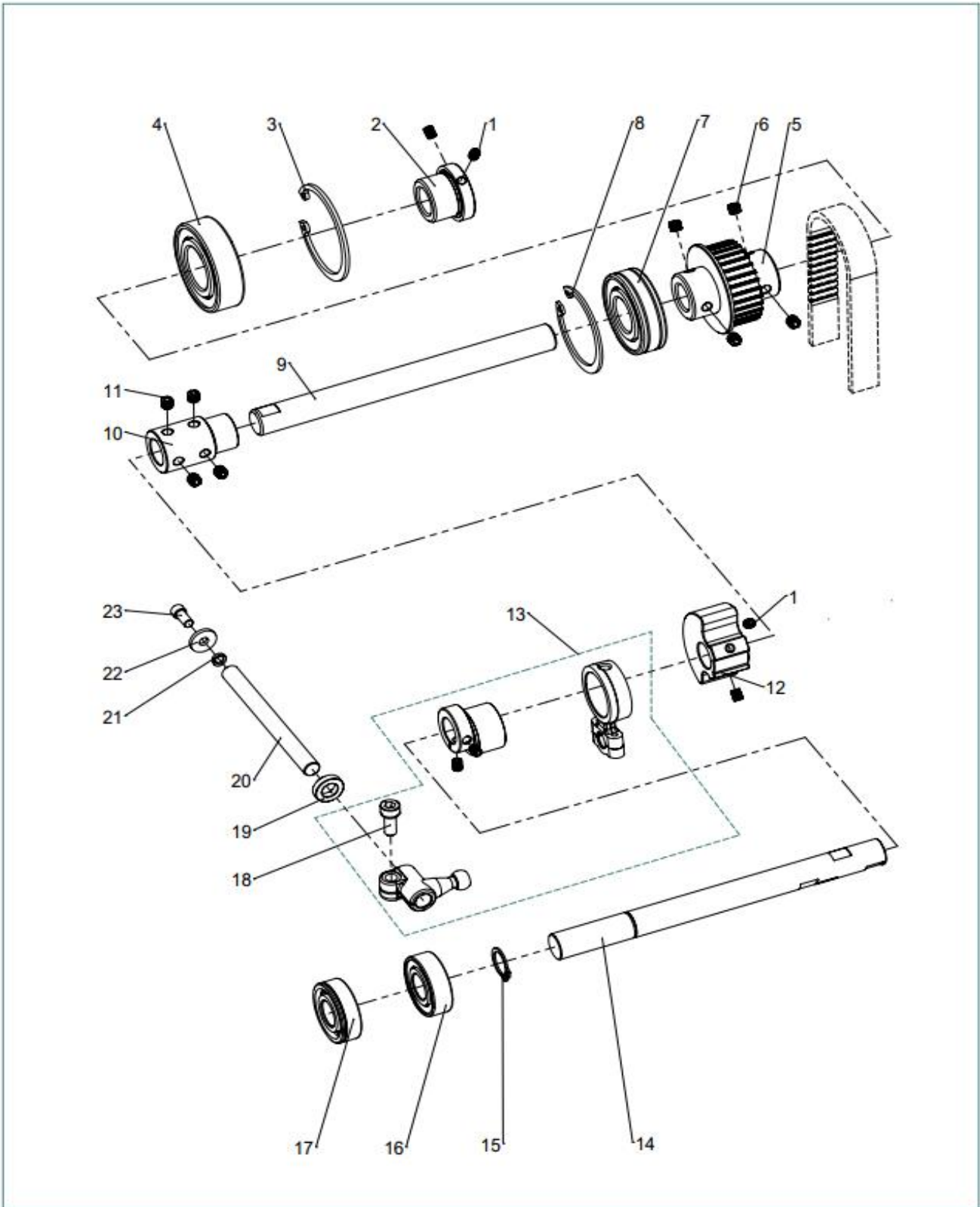
序号	图 号	名 称	NAME OF PARTS	数量
1	22-20007000	橡胶塞	PLUG	1
2	331.04-01	上滚轮驱动轴套(右)	BUSHING	1
3	331.04-02	上滚轮驱动轴套(中)	BUSHING	1
4	13-13030206	骨架油封	GASKET	1
5	331.04-03	上滚轮驱动轴套(左)	BUSHING	1
6	331.04-04	吊臂轴套	BUSHING	1
7	22-16506019	橡胶塞	PLUG	1
8	331.04-05	针线挑线杆轴套(后)	BUSHING	1
9	22-08506011	橡胶塞	PLUG	2
10	13-07040140A	骨架油封	GASKET	1
11	331.04-06	针杆下套	BUSHING	1
12	331.04-07A	针杆上套	BUSHING	1
13	331.04-08	针线挑线杆轴套(前)	BUSHING	1
14	13-08270200	骨架油封	GASKET	1
15	331.04-11	拨线曲柄轴套(后)	BUSHING	1
16	331.04-12A	滚轮轴套	BUSHING	1
17	331.04-13	压脚轴套	BUSHING	1
18	13-08240150	骨架油封	GASKET	1
19	331.04-10	送料轴套(右)	BUSHING	1
20	331.04-15	送料轴套(中)	BUSHING	1
21	331.04-14	送料轴套(左)	BUSHING	1
22	331.04-16	下弯针架轴套(右)	BUSHING	1
23	331.04-17	下弯针架轴套(中)	BUSHING	1
24	331.04-18	下弯针架轴套(左)	BUSHING	1
25	331.04-19	下弯针架拉杆轴套	BUSHING	1
26	331.04-20	拨线杆轴套(左)	BUSHING	1
27	331.04-21	拨线杆轴套(右)	BUSHING	1
28	331.04-22	拨线曲柄轴套(前)	BUSHING	1



5. 下轴部件 CRANKSHAFT MECHANISM

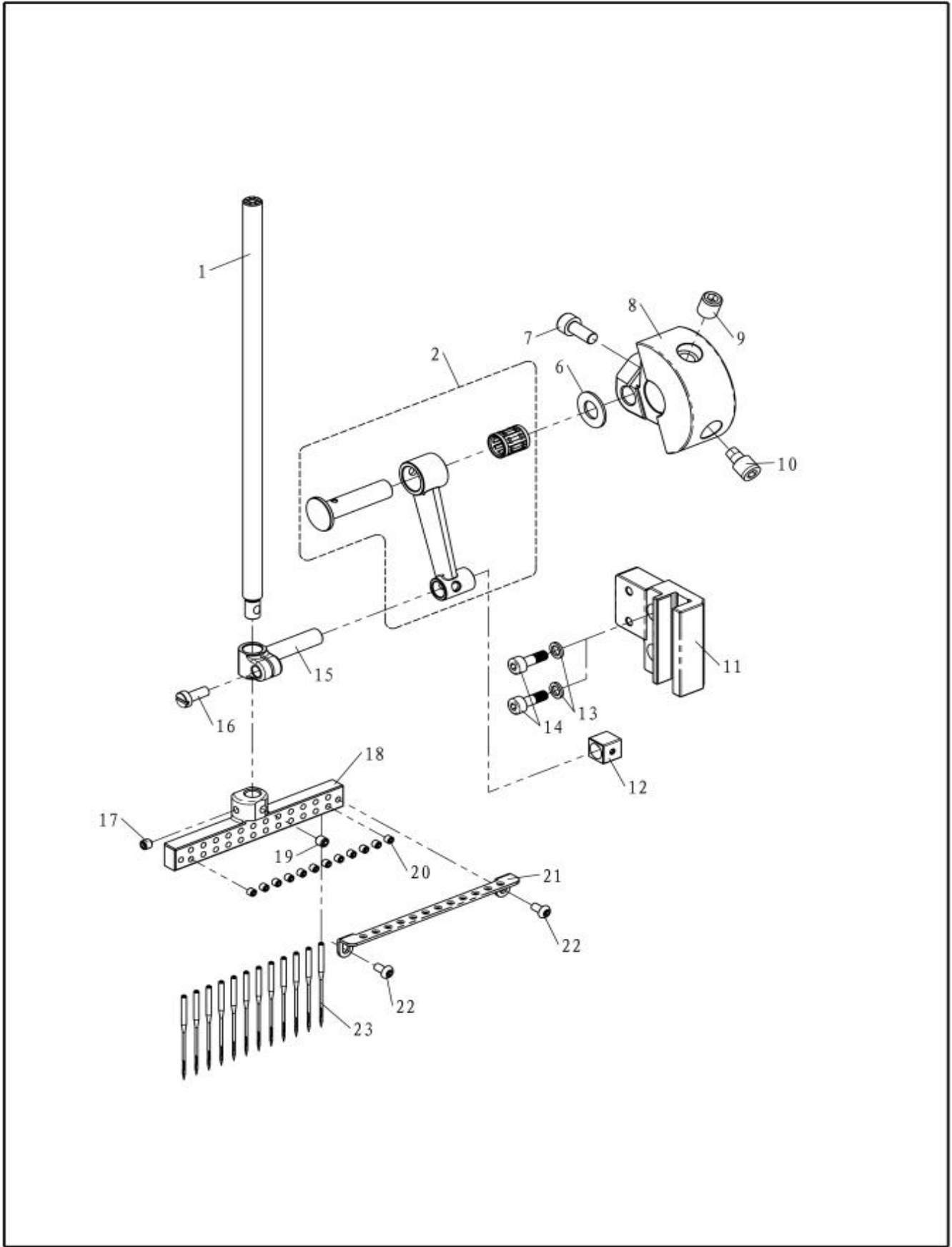
序号	图号	名称	NAME OF PARTS	数量
1	14-6204-2RSNR/2	轴承6204-2RS/2	BEARING	1
2	331.05-01	蜗杆	ENDLESS SCREW	1
3	01-806000614-1	内六角凹端紧定螺钉 M6×6	SCREW	2
4	01-805000614-6	内六角槽无帽凹端螺钉M5×6	SCREW	6
5	331.05-02	轴承内套(中)	BUSHING	1
6	14-6004-2Z/1	深沟球轴承6004-2Z/1	BEARING	1
7	331.05-03A	下轴	SHAFT	1
8	10-1251000-1	轴用钢丝挡圈14	C-RING	1
9	331.05-18	孔塞(06)	PLUG	2
10	331.05-05	拨线偏心连杆组	ECCENTRIC LINK ASM.	1
13	01-806000814-1	内六角凹端紧定螺钉 M6×8	SCREW	2
14	331.05-06	拨针偏心套	ECCENTRIC	1
15	14-6203-2Z/1	轴承6203-2Z/1	BEARING	1
16	331.05-07	轴承内套(左)	BUSHING	1
17	11-3781525-1	孔用弹性挡圈35	C-RING	1
18	14-6003-2Z/1	深沟球轴承6003-2Z/1	BEARING	1
19	01-506001024-1	内六角圆柱头螺钉 M6×10	SCREW	1
20	07-0631616-1	弹簧垫圈6	SPRING WASHER	1
21	05-064151902-5	平垫圈	WASHER	1
22	05-122102602-5	平垫圈	WASHER	1
23	14-AXK1226	推力轴承A×K1226	BEARING	1
24	331.05-09	拨线曲柄轴	SHAFT	1
25	01-506001424-1	内六角圆柱头螺钉 M6×14	SCREW	1
26	331.05-11	摆动臂	LEVER	1
27	01-805000514-1	内六角凹端紧定螺钉 M5×5	SCREW	2
28	331.05-12	拨线轴座	LEVER	1
29	331.05-17	拨线连杆	LEVER	1
30	01-803000444-1	内六角锥端紧定螺钉 M3×4	SCREW	2
31	331.05-10	拨杆销	PIN	2
32	331.05-15	油线	FELT	2
33	331.05-13	拨针	RETAINER LOOPER	12
34	01-803000314-1	内六角凹端紧定螺钉 M3×3	SCREW	12
35	331.05-14	拨线杆HW800TA-1264	RETAINER HOLDER	1
	332.05-14	拨线杆HW800T-0485	RETAINER HOLDER	1
	333.05-14	拨线杆HW800T-1332	RETAINER HOLDER	1
	334.05-14	拨线杆HW800T-2332	RETAINER HOLDER	1
	335.05-14	拨线杆HW800TA-0464	RETAINER HOLDER	1

6.上轴部件 CRANKSHAFT MECHANISM



6. 上轴部件 CRANKSHAFT MECHANISM

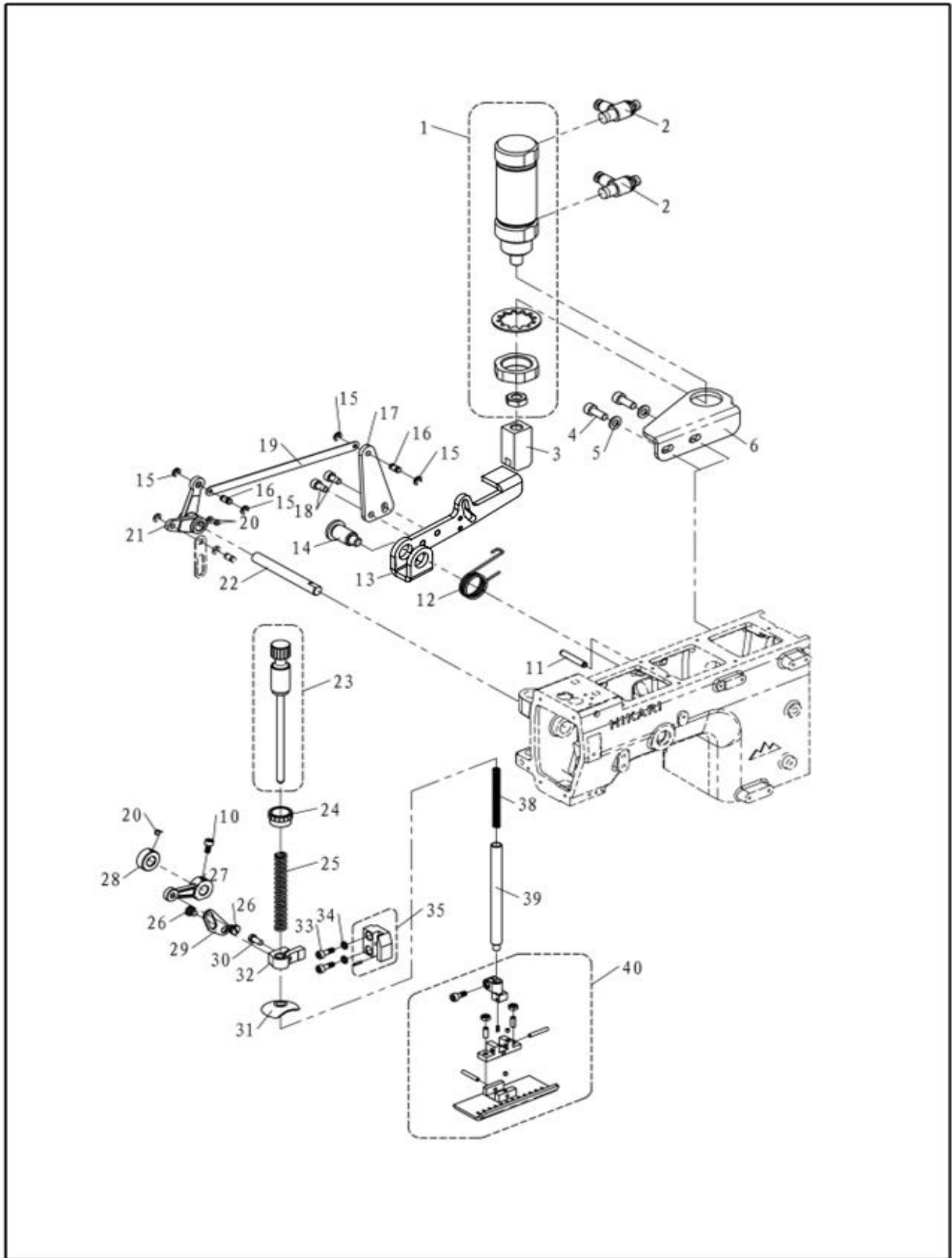
序号	图 号	名 称	NAME OF PARTS	数量
1	01-805000614-6	内六角槽无帽凹端螺钉M5×6	SCREW	4
2	336.06-02	轴承内套	BUSHING	1
3	11-5622030-1	孔用弹性挡圈52	C-RING	1
4	14-6205-2Z/1	深沟球轴承6205-2Z/1	BEARING	1
5	331.06-03	上轴同步带轮	SYNCHRONOUS BELT WHEEL	1
6	01-806750614-1	内六角凹端紧定螺钉M6×0.75×6	SCREW	4
7	14-6204-2RS/1	深沟球轴承6204-2RS/1	BEARING	1
8	11-5051530-1	孔用弹性挡圈47	C-RING	1
9	336.06-04	上轴(右)	SHAFT	1
10	331.06-05	连轴器	SHAFT JIONT	1
11	01-806000614-1	内六角凹端紧定螺钉 M6×6	SCREW	4
12	331.06-12	配重	BALANCING WEIGHT	1
13	331.06-06	上输线偏心连杆组件	ECCENTRIC LINK ASM.	1
14	331.06-11	上轴(左)	SHAFT	1
15	10-1381017-1	轴用挡圈15	C-RING	1
16	14-6202-2Z/1	深沟球轴承6202-2Z/1	BEARING	1
17	14-6202-2ZNR/2	轴承6202-2ZNR/2	BEARING	1
18	01-506001424-1	内六角圆柱头螺钉 M6×14	SCREW	1
19	331.06-09	衬套	BUSHING	1
20	331.06-08	传动轴	SHAFT	1
21	07-0521313-1	弹簧垫圈5	SPRING WASHER	1
22	05-053201452-5	平垫圈	WASHER	1
23	01-505001024-1	内六角圆柱头螺钉 M5×10	SCREW	1



7. 针杆部件 NEEDLE BAR MECHANISM

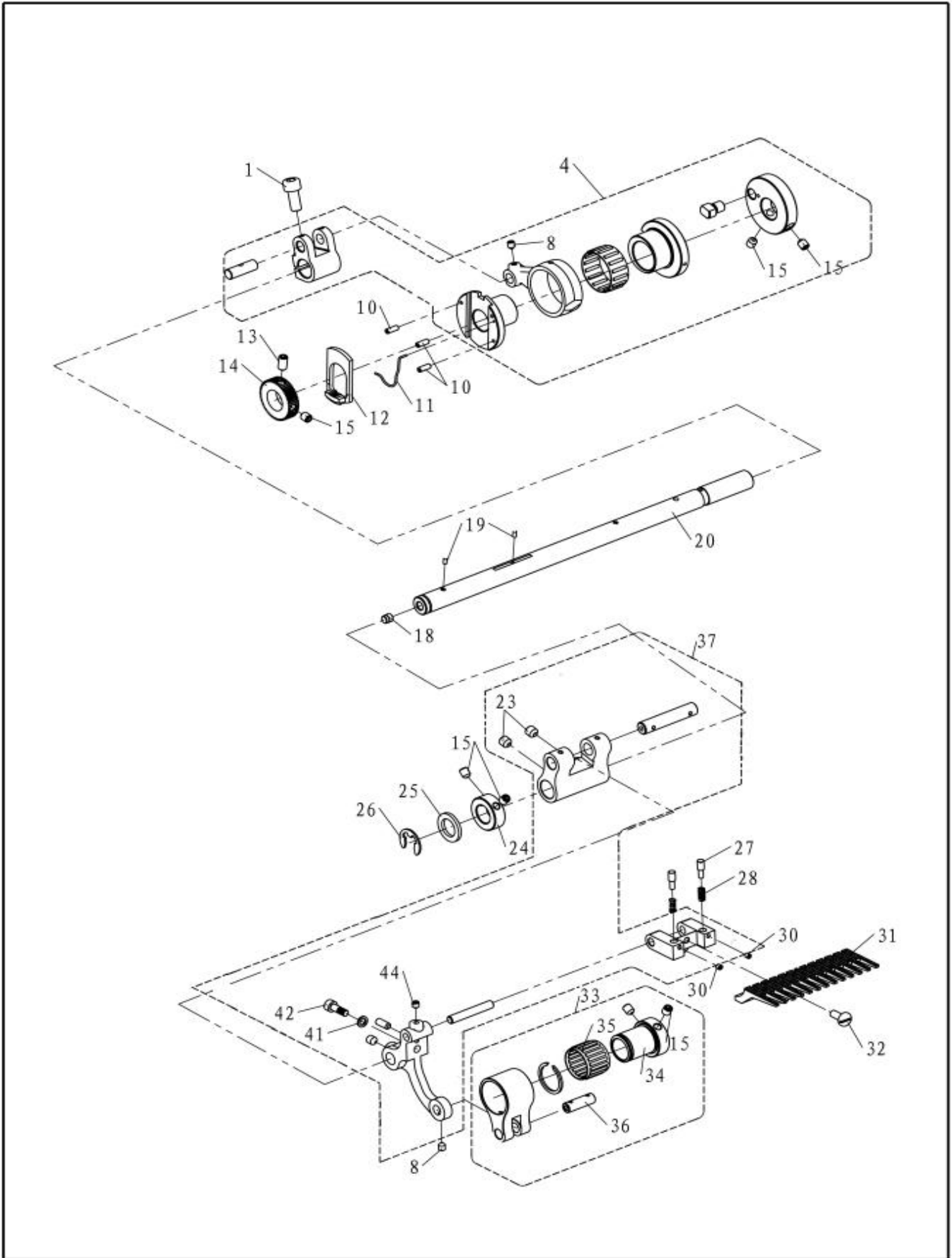
序号	图 号	名 称	NAME OF PARTS	数量
1	331.07-01	针杆	NEEDLE BAR	1
2	331.07-02	针杆连杆组	CONNECTING LINK ASM.	1
6	05-081101553-5	平垫片8.1×1.0×15.5	WASHER	1
7	01-505001424-1	内六角槽圆柱头螺钉M5×14	SCREW	1
8	331.07-04A	针杆曲柄	CRANK	1
9	01-808001014-1	内六角凹端紧定螺钉 M8×10	SCREW	1
10	01-808001434-1	针杆曲柄螺钉	SCREW	1
11	331.07-05	针杆导轨	NEEDLE BAR GUIDE	1
12	311.06-09	针杆连杆滑块HW762T	SLIDING BLOCK	1
13	05-043100700-1	平垫圈	WASHER	2
14	01-504001224-1	内六角圆柱头螺钉 M4×12	SCREW	2
15	331.07-07	针杆连接柱	LINK ROD	1
16	01-504001021-1	开槽圆柱头螺钉 M4×10	SCREW	1
17	01-804000414-1	内六角凹端紧定螺钉 M4×4	SCREW	1
18	331.07-08	针夹HW800TA-1264	NEEDLE CLAMP	1
	332.07-08	针夹HW800TA-0485	NEEDLE CLAMP	1
	333.07-08	针夹HW800T-1332	NEEDLE CLAMP	1
	334.07-08	针夹HW800T-2332	NEEDLE CLAMP	1
	335.07-08	针夹HW800TA-0464	NEEDLE CLAMP	1
19	01-804000544-1	内六角锥端紧定螺钉 M4×5	SCREW	1
20	01-803000324-1	内六角平端紧定螺钉 M3×3	SCREW	12
21	331.07-09	导线板HW800TA-1264	THREAD GUIDE	1
	332.07-09	针夹导线HW800T-0485	THREAD GUIDE	1
	333.07-09	针夹导线HW800T-1332	THREAD GUIDE	1
	335.07-09	针夹导线HW800TA-0464	THREAD GUIDE	1
22	01-303000521-2	开槽半圆头螺钉M3×5	SCREW	2
23	331.07-10	机针U0×113GS90/14	NEEDLE	12

8. 压料部件 PRESSER FOOT MECHNISM



8. 压料部件 PRESSER FOOT MECHNISM

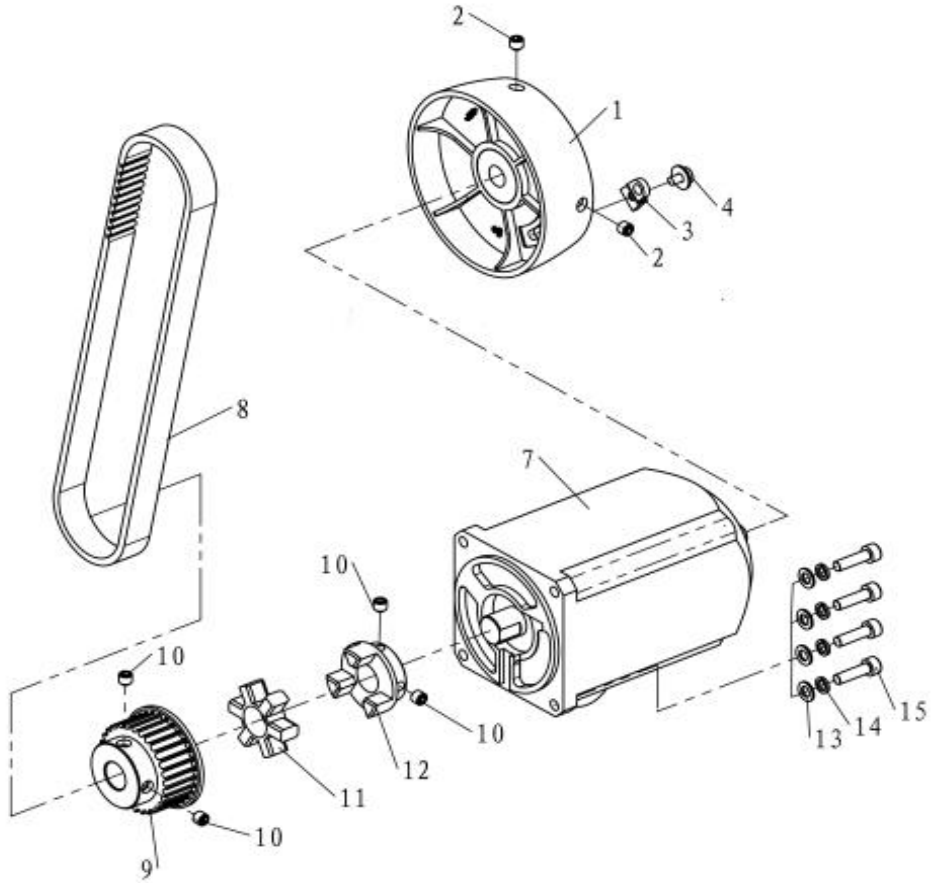
序号	图号	名称	NAME OF PARTS	数量
1	71-CM2B32-25Z(SMC)	气缸组件	AIR CYLINDER ASM.	1
2	73-AS2201FG-01-04	速度控制阀(L型) R1/8'XΦ4	JOINT	2
3	331.08-02	抬压脚槽块	BRACKET	1
4	01-506001624-1	内六角圆柱头螺钉 M6×16	SCREW	2
5	05-063101201-1	平垫圈	WASHER	2
6	331.08-03A	抬压脚气缸固定座	BRACKET	1
10	01-504000824-1	内六角圆柱头螺钉 M4×8	SCREW	1
11	15-1503005-1	弹性圆柱销5×30	PIN	1
12	331.08-05	抬压脚拉杆扭簧	SPRING	1
13	331.08-06A	抬压脚拉杆	LEVER	1
14	331.08-07	抬压脚拉杆轴位螺钉	SCREW	1
15	06-0350608-1	E型挡圈3.5	E-RING	4
16	331.08-08	升降杆连接拉板销	PIN	2
17	331.08-09	上滚轮升降板	PLATE	1
18	01-505001024-1	内六角圆柱头螺钉 M5×10	SCREW	2
19	331.08-10	升降杆连接拉板	PLATE	1
20	01-804000414-1	内六角凹端紧定螺钉 M4×4	SCREW	3
21	331.08-11	吊臂	LEVER	1
22	331.08-12A	压脚销	PIN	1
23	331.08-13	调压螺钉组件	SCREW ASM.	1
24	331.08-14	调压螺母	NUT	1
25	331.08-15	压杆簧	SPRING	1
26	331.08-16	轴位螺钉 SM3/16"×32-2	SCREW	2
27	331.08-17A	抬压脚摆动杆	CONNECTING ROD	1
28	331.08-18	压脚销挡圈	WASHER	1
29	331.08-19	抬压脚吊板	PLATE	1
30	02-511401021-1	开槽圆柱头螺钉 SM11/64"×40-10	SCREW	1
31	331.08-20	封油片	GASKET	1
32	331.08-21	压杆滑块	SLIDING BLOCK	1
33	01-504001224-1	内六角圆柱头螺钉 M4×12	SCREW	2
34	05-043100700-1	平垫圈	WASHER	2
35	331.08-22	压杆滑槽组	SLIDING BLOCK ASM.	1
38	331.08-23	压杆细弹簧	SPRING	1
39	331.08-24	压杆	SHAFT	1
40	331.08-25	压脚组件HW800TA-1264	PRESSER FOOT ASM.	1
	332.08-25	压脚组件HW800TA-0485	PRESSER FOOT ASM.	1
	333.08-25	压脚组件HW800TA-1332	PRESSER FOOT ASM.	1
	334.08-25	压脚组件HW800TA-2332	PRESSER FOOT ASM.	1
	335.08-25	压脚组件HW800TA-0464	PRESSER FOOT ASM.	1



9. 送料部件

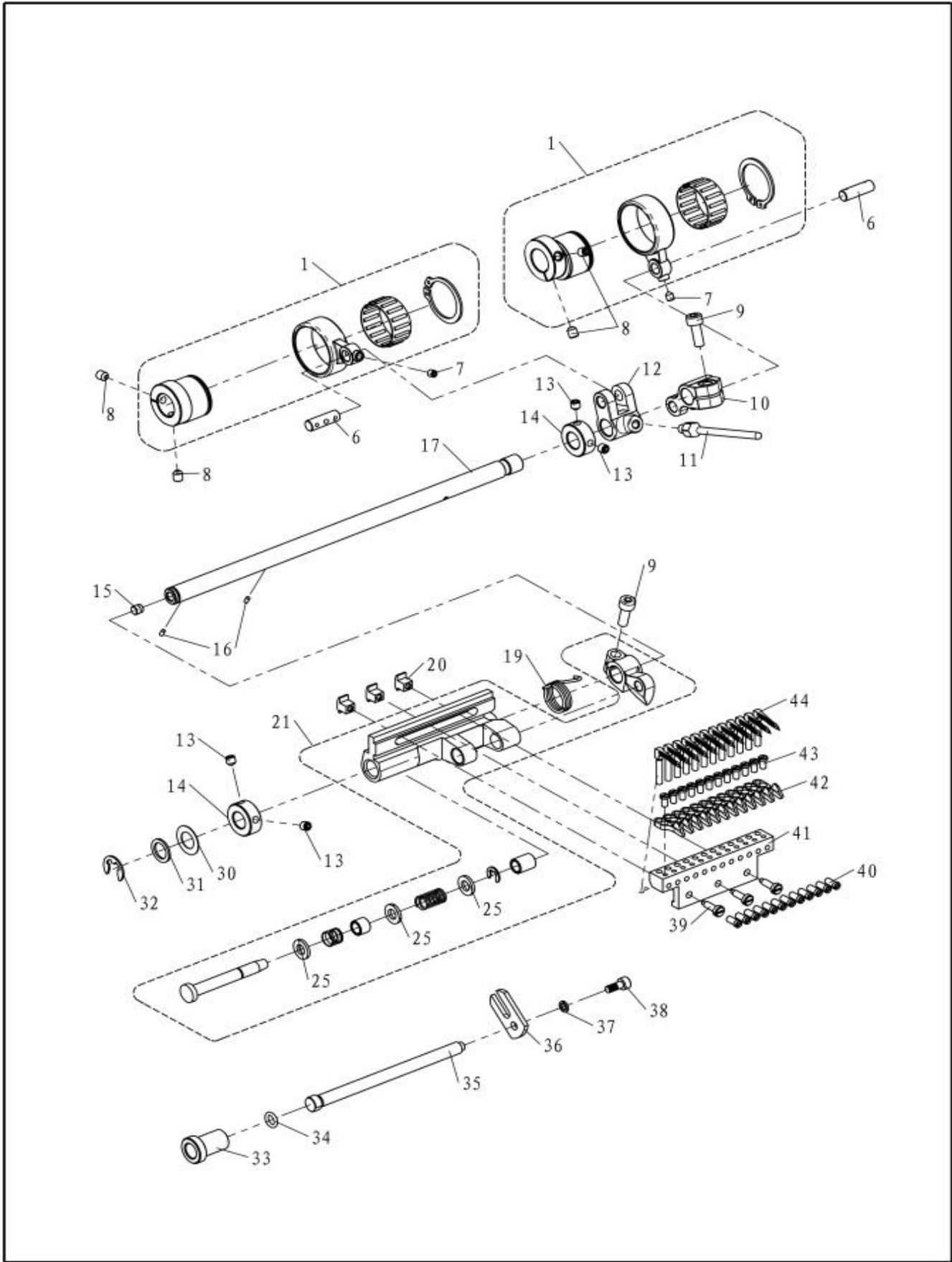
FEED MECHANISM

序号	图号	名称	NAME OF PARTS	数量
1	01-506001424-1	内六角圆柱头螺钉 M6×14	SCREW	1
4	331.09-03	针距调节组	STITCH LENGTH ADJUSTING	1
8	01-804000544-1	内六角锥端紧定螺钉 M4×5	SCREW	2
10	331.09-19	挡销螺钉 M3	SCREW	3
11	331.09-20	针距调节锁簧	SPRING	1
12	331.09-21	调节送料齿片	REGULATING GEAR	1
13	01-805001014-1	内六角凹端紧定螺钉 M5×10	SCREW	1
14	331.09-22	离合齿轮	REGULATING GEAR	1
15	01-805000614-6	内六角槽无帽凹端螺钉M5×6	SCREW	7
18	331.09-06	孔塞 (05)	PLUG	1
19	351.09-04	油毡	FELT	2
20	331.09-07A	牙架轴	SHAFT	1
23	01-806000614-1	内六角凹端紧定螺钉 M6×6	SCREW	2
24	331.09-10	送料曲柄挡圈	COLLAR	1
25	05-121201903-5	平垫圈	WASHER	1
26	06-0901018-1	E型挡圈9	E-RING	1
27	331.09-11	抬牙销	PIN	2
28	331.09-12	抬牙销簧	SPRING	2
30	01-803000314-1	内六角凹端紧定螺钉 M3×3	SCREW	2
31	331.09-14	送料牙HW800TA-1264	FEED DOG	1
	332.09-14	送料牙HW800T-0485	FEED DOG	1
	333.09-14	送料牙HW800T-1332	FEED DOG	1
	334.09-14	送料牙HW800TA-2332	FEED DOG	1
	335.09-14	送料牙HW800TA-0464	FEED DOG	1
32	02-511401021-1	开槽盘头螺钉 SM11/64"×40-10	SCREW	1
33	331.09-15-00	抬牙偏心组件	ECCENTRIC CRANK ASM.	1
34	331.09-15	抬牙偏心套	ECCENTRIC	1
35	14-K182217	滚针 K18×22×17	BEARING	1
36	331.09-01	弯针连杆销	PIN	1
37	331.09-17-00	牙架座组件	FEED DOG HOLDER ASM.	1
41	05-043100700-1	平垫圈	WASHER	1
42	01-504001224-1	内六角圆柱头螺钉 M4×12	SCREW	1
44	01-804000414-1	内六角凹端紧定螺钉 M4×4	SCREW	1



10. 连轴器、电机部件 MOTOR MECHANISM

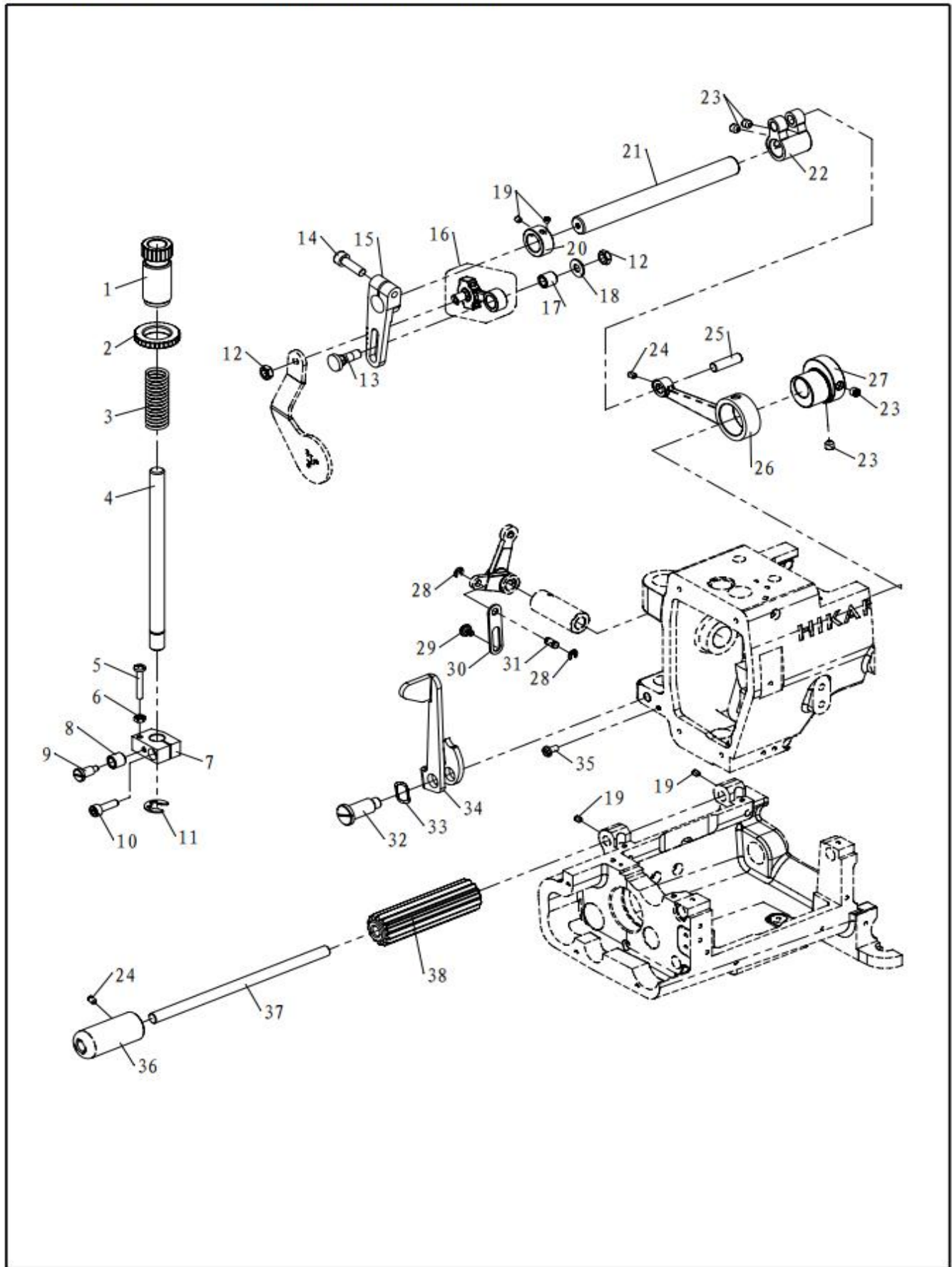
序号	图 号	名 称	NAME OF PARTS	数量
1	370.04-25	手轮	HAND WHEEL	1
2	02-815281014-1	内六角凹端紧定螺钉SM15/64” ×28	SCREW	2
3	103.13-107	磁钢座组件	MAGNETS	1
4	18-404000823-3	磁钢固定螺钉	SCREW	1
7	M0-34N-650	电机	MOTOR	1
8	331.10-03A	同步带	SYNCHRONOUS BELT	1
9	331.10-04-01	下轴同步带轮	SYNCHRONOUS BELT WHEEL	1
10	01-806750614-1	内六角凹端紧定螺钉 M6×0.75×6	SCREW	4
11	331.10-04-02	同步带轮缓冲垫	CUSHION	1
12	336.10-04-03	电机连轴器	COUPLING	1
13	05-053101000-1	平垫片	WASHER	4
14	07-0521313-1	弹簧垫圈5	SPRING WASHER	4
15	01-505001824-1	内六角圆柱头螺钉 M5×18	SCREW	4



11. 弯针驱动部件

LOOPER MECHANISM

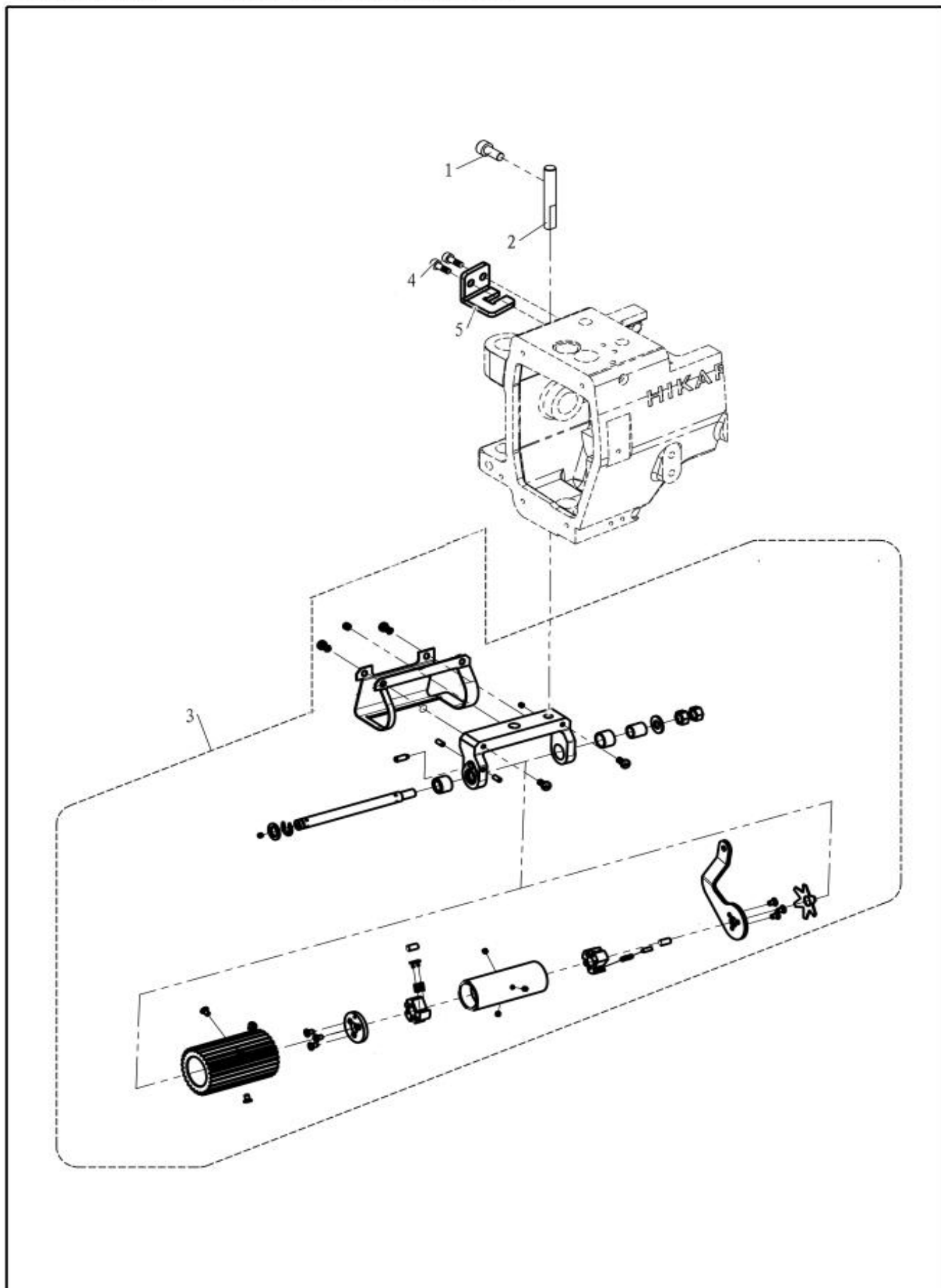
序号	图号	名称	NAME OF PARTS	数量
1	331.11-01	弯针偏心组	ECCENTRIC LINK ASM.	2
6	331.09-01	弯针连杆销	PIN	2
7	01-804000544-1	内六角锥端紧定螺钉 M4×5	SCREW	2
8	01-805000614-6	内六角槽无帽凹端螺钉M5×6	SCREW	4
9	01-505001424-1	内六角圆柱头螺钉 M5×14	SCREW	2
10	331.11-02A	弯针曲柄	CRANK	1
11	331.11-05	打线杆	TAKE-UP ROD	1
12	331.11-04	打线杆曲柄	CRANK	1
13	01-805000514-1	内六角凹端紧定螺钉 M5×5	SCREW	4
14	331.11-06	打线偏心挡圈	COLLAR	2
15	331.09-06	孔塞 (05)	PLUG	1
16	351.09-04	油毡	FELT	2
17	331.11-07	弯针架轴	SHAFT	1
19	331.11-09	弯针架座扭簧	SPRING	1
20	331.11-10A	滑块	SLIDING BLOCK	3
21	331.11-11	弯针承座组	LOOPER ROCKER ASM.	1
25	05-064161200-1	平垫圈6	WASHER	3
30	331.11-20	平垫圈	WASHER	1
31	05-101111453-5	平垫圈	WASHER	1
32	06-0801016-1	E型挡圈8	E-RING	1
33	331.11-18	拉杆套	STUD	1
34	12-060180	O型圈6×1.8	O-RING	1
35	331.11-17	弯针架座拉杆	SHAFT	1
36	331.11-16	拉板	BRACKET	1
37	07-0421111-1	弹簧垫圈4	SPRING WASHER	1
38	01-504001024-1	内六角圆柱头螺钉 M4×10	SCREW	1
39	331.11-12	弯针座螺钉	SCREW	3
40	02-909400721-1	开槽小帽 (0)4.5)螺钉SM9/64"×40	SCREW	12
41	331.11-13	弯针座HW800TA-1264	LOOPER HOLDER	1
	332.11-13	弯针座HW800T-0485	LOOPER HOLDER	1
	333.11-13	弯针座HW800T-1332	LOOPER HOLDER	1
	334.11-16	弯针组件HW800T-2332	LOOPER HOLDER	1
	335.11-13	弯针座HW800TA-0464	LOOPER HOLDER	1
42	331.11-14	护针	NEEDLE GUARD	12
43	02-608440621-1	开槽薄帽 (1.5)螺钉SM1/8"×44-6	SCREW	12
44	331.11-15	弯针	LOOPER	12



12. 拖轮驱动部件

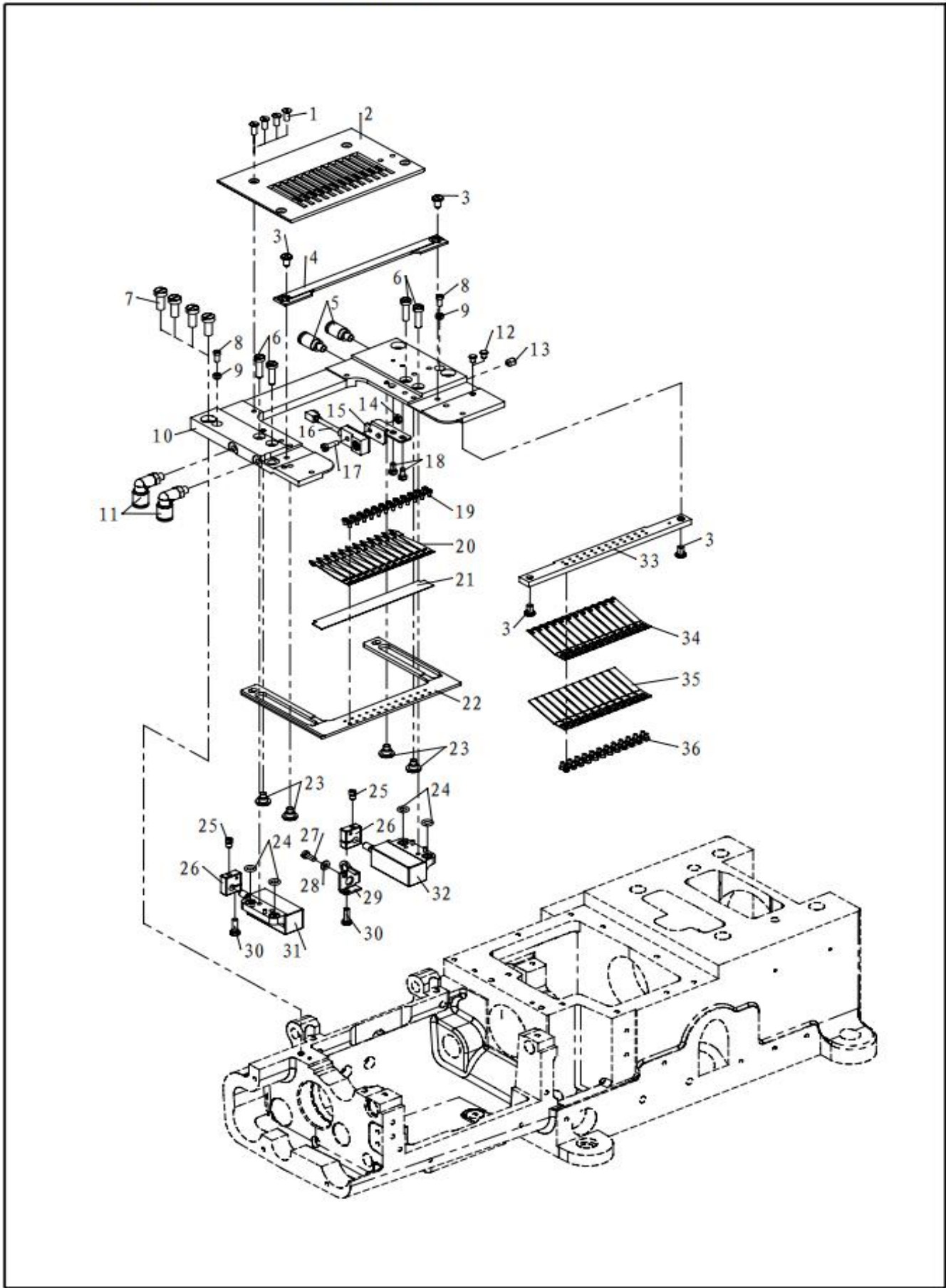
REAR PULLER MECHANISM

序号	图号	名称	NAME OF PARTS	数量
1	331.12-01	滚轮调压螺钉	SCREW	1
2	331.12-02	锁紧螺母	NUT	1
3	331.12-03	上滚轮压簧	SPRING	1
4	331.12-04	上滚轮轴	SHAFT	1
5	01-404002523-1	十字一字槽盘头螺钉 M4×25	SCREW	1
6	03-604000320-1	六角螺母M4	NUT	1
7	331.12-05	上滚轮压簧托架	BRACKET	1
8	331.12-06	扳手滚柱	COLLAR	1
9	331.12-07	滚柱螺钉	SCREW	1
10	01-505001624-1	内六角圆柱头螺钉 M5×16	SCREW	1
11	06-0901018-1	E型挡圈9	E-RING	1
12	04-616400430-1	六角螺母SM1/4"×40	NUT	3
13	331.12-24	球连杆连接销	PIN	1
14	01-506002024-1	内六角圆柱头螺钉 M6×20	SCREW	1
15	331.12-23C	上滚轮摆杆	LEVER	1
16	331.12-22	球连杆组件	CONNENTING ROD	1
17	331.12-21	球连杆滚柱	COLLAT	1
18	05-064121400-1	平垫圈	WASHER	1
19	01-804000414-1	内六角凹端紧定螺钉 M4×4	SCREW	4
20	331.12-27	上滚轮驱动轴挡圈	BUSHING	1
21	331.12-09	上滚轮驱动轴	SHAFT	1
22	331.12-10	上滚轮传动轴杠杆	LEVER	1
23	01-806000614-1	内六角凹端紧定螺钉 M6×6	SCREW	4
24	01-804000614-1	内六角凹端紧定螺钉 M4×6	SCREW	2
25	331.12-11	上滚轮驱动连杆销	PIN	1
26	331.12-12	上滚轮驱动连杆	CONNENTING ROD	1
27	331.12-13	上滚轮偏心轮	ECCENTRIC	1
28	06-0350608-1	E型挡圈3.5	E-RING	2
29	331.12-14	吊板螺钉	SCREW	1
30	331.12-15	升降杆连接吊板	PLATE	1
31	331.08-08	升降杆连接拉板销	PIN	1
32	331.12-16	扳手螺钉	SCREW	1
33	08-1300317-1	被 [Ⓡ] 挡圈n	SCRRW	1
34	331.12-17	上滚轮扳手	LEVER	1
35	01-504000821-1	开槽盘头螺I M4×8	SCREW	1
36	331.12-20	拖料套	GUIDE COLLER	1
37	331.12-19	下滚轮轴	SHAFT	1
38	331.13-03-21	下滚轮	REAR PULLER GEAR	1



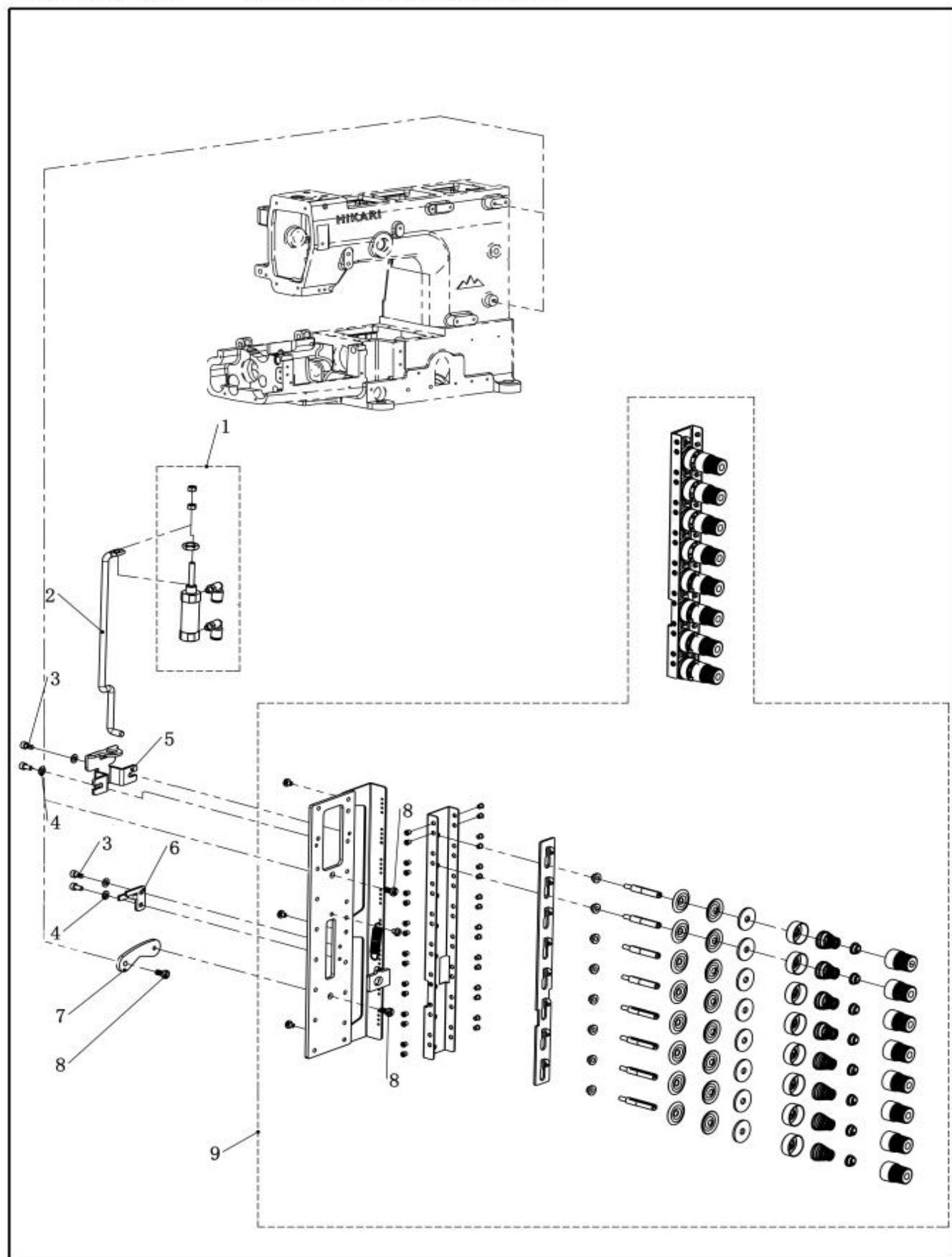
13. 拖轮部件 REAR PULLER MECHANISM

序号	图号	名称	NAME OF PARTS	数量
1	01-506001424-1	内六角圆柱头螺钉 M6×14	SCREW	1
2	331.13-04C	导向销	PIN	1
3	331.13-03	拖轮组件	SMOOTH PULLER ASM.	1
4	331.13-05	导向销导轨	GUIDE	1
5	01-504000821-1	一字槽圆柱头螺钉M4×8	SCREW	2



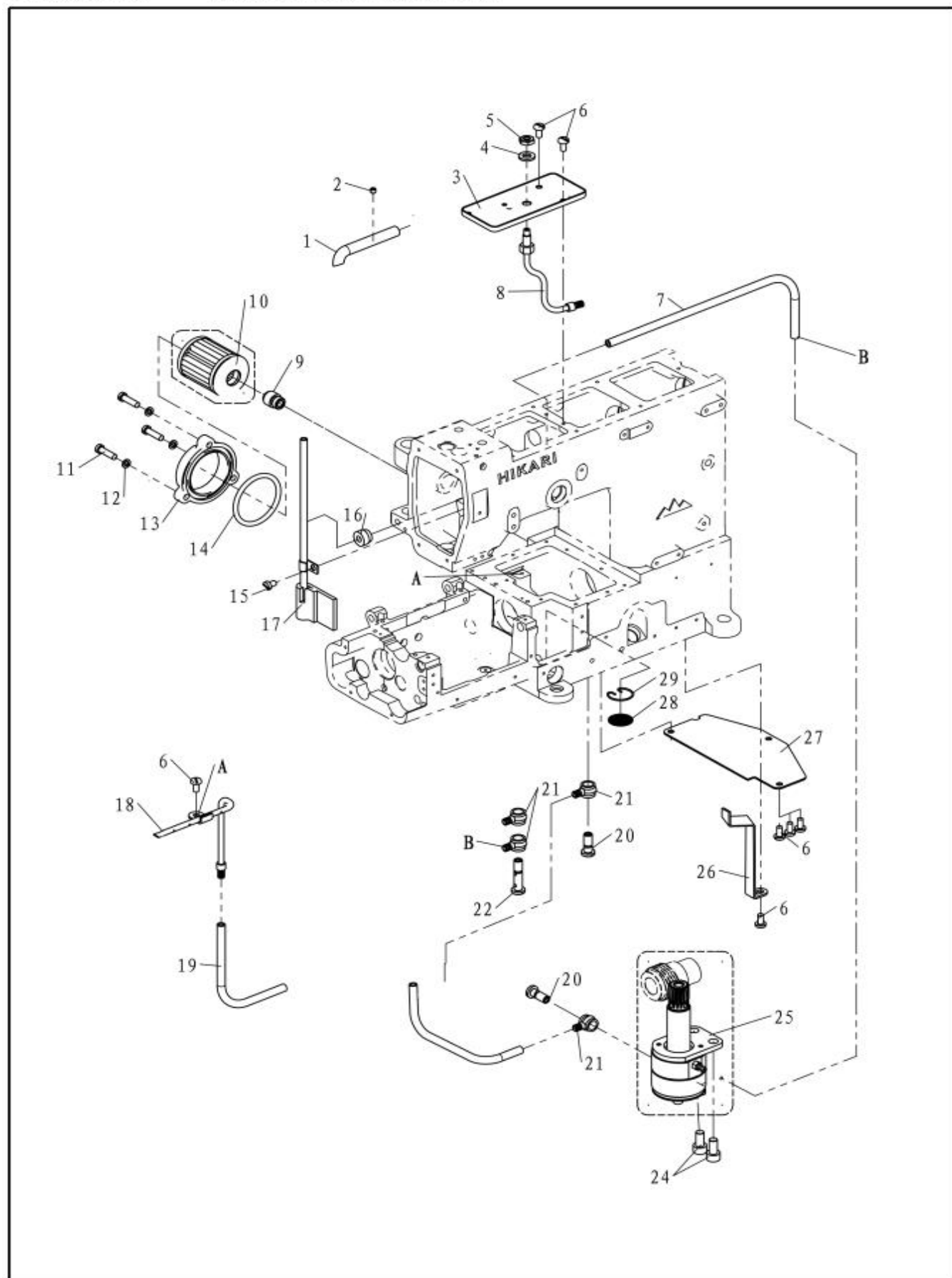
14. 针板部件 KNIFE MECHANISM

序号	图号	名称	NAME OF PARTS	数量
1	02-109400821-1	开槽沉头螺钉SM9/64"×40-8	SCREW	4
2	331.14-01G	针板HW800TA-1264	NEEDLE PLATE	1
	332.14-01G	针板HW800TA-0485	NEEDLE PLATE	1
	333.14-01G	针板HW800TA-1332	NEEDLE PLATE	1
	334.14-01G	针板HW800TA-2332	NEEDLE PLATE	1
	335.14-01	针板HW800TA-0464	NEEDLE PLATE	1
3	01-604000621-1	开槽薄帽(1.5)螺钉 M4×6	SCREW	4
4	331.14-02A	定刀	STATIONARY KNIFE	1
5	331.18-07	M5气管接头	JOINT	2
6	01-504001421-1	开槽圆柱头螺钉 M4×14	SCREW	4
7	01-505001221-1	开槽圆柱头螺钉 M5×12	SCREW	4
8	331.14-05	针板销螺钉 M3×6	SCREW	2
9	331.14-06	针板销套	BUSHING	2
10	331.14-04A	针板座	NEEDLE PLATE SUPPORT BRACKET	1
11	331.18-13	L型弯头4-M5	JOINT	2
12	331.02-12	橡胶缓冲垫	CUSHION RUBBER	2
13	01-805000614-6	内六角槽无帽凹端螺钉M5×6	SCREW	1
14	03-603000240-3	六角螺母M3	SCREW	1
15	331.14-09	开关安装板	PLATE	1
16	331.14-30	检测器	DETECTOR	1
17	01-503001021-1	开槽圆柱头螺钉 M3×10	SCREW	1
18	01-503000621-1	开槽圆柱头螺钉 M3×6	SCREW	2
19	01-502000321-1	开槽圆柱头螺钉 M2×3	SCREW	24
20	331.14-11G	动刀	MOVABLE KNIFE	12
21	331.14-29	布毛清除片	CLEANER	1
22	331.14-14G	动刀架HW800TA-1264	MOVABLE KNIFE BASE	1
	332.14-14G	动刀架HW800TA-0485	MOVABLE KNIFE BASE	1
	333.14-14G	动刀架HW800TA-1332	MOVABLE KNIFE BASE	1
	334.14-14G	动刀架HW800TA-2332	MOVABLE KNIFE BASE	1
	335.14-14	动刀架HW800TA-0464	MOVABLE KNIFE BASE	1
23	331.14-40A	动刀架轴位螺钉	SCREW	4
24	12-040150	O形橡胶密封圈HW800TA	O-RING	4
25	331.14-18	气缸推力销	PIN	2
26	331.14-19A	气缸连接块	GUIDE BRACKET	2
27	01-503000821-1	开槽圆柱头螺钉 M3×8	SCREW	1
28	05-032050700-1	平垫圈	WASHER	1
29	331.14-10	磁钢组件	MAGNEY ASM.	1
30	01-535001021-1	开槽圆柱头螺钉 M3.5×10	SCREW	2
31	331.14-26A	剪线气缸(左)	AIR CYLINDER (R)	1
32	331.14-25A	剪线气缸(右)	AIR CYLINDER (R)	1
33	331.14-15A	动刀弹簧片安装板HW800TA-1264	SPRING BASE	1
	332.14-15A	动刀弹簧片安装板HW800TA-0485	SPRING BASE	1
	333.14-15A	动刀弹簧片安装板HW800TA-1332	SPRING BASE	1
	334.14-15A	动刀弹簧片安装板HW800TA-2332	SPRING BASE	1
	335.14-15	动刀弹簧片安装板HW800TA-0464	SPRING BASE	1
34	331.14-16G	动刀弹簧片	SPRING	12
35	331.14-17G	动刀压板	LEAF SCREW	12
36	01-502000321-1	一字槽圆柱头螺钉M2×3	SCREW	24



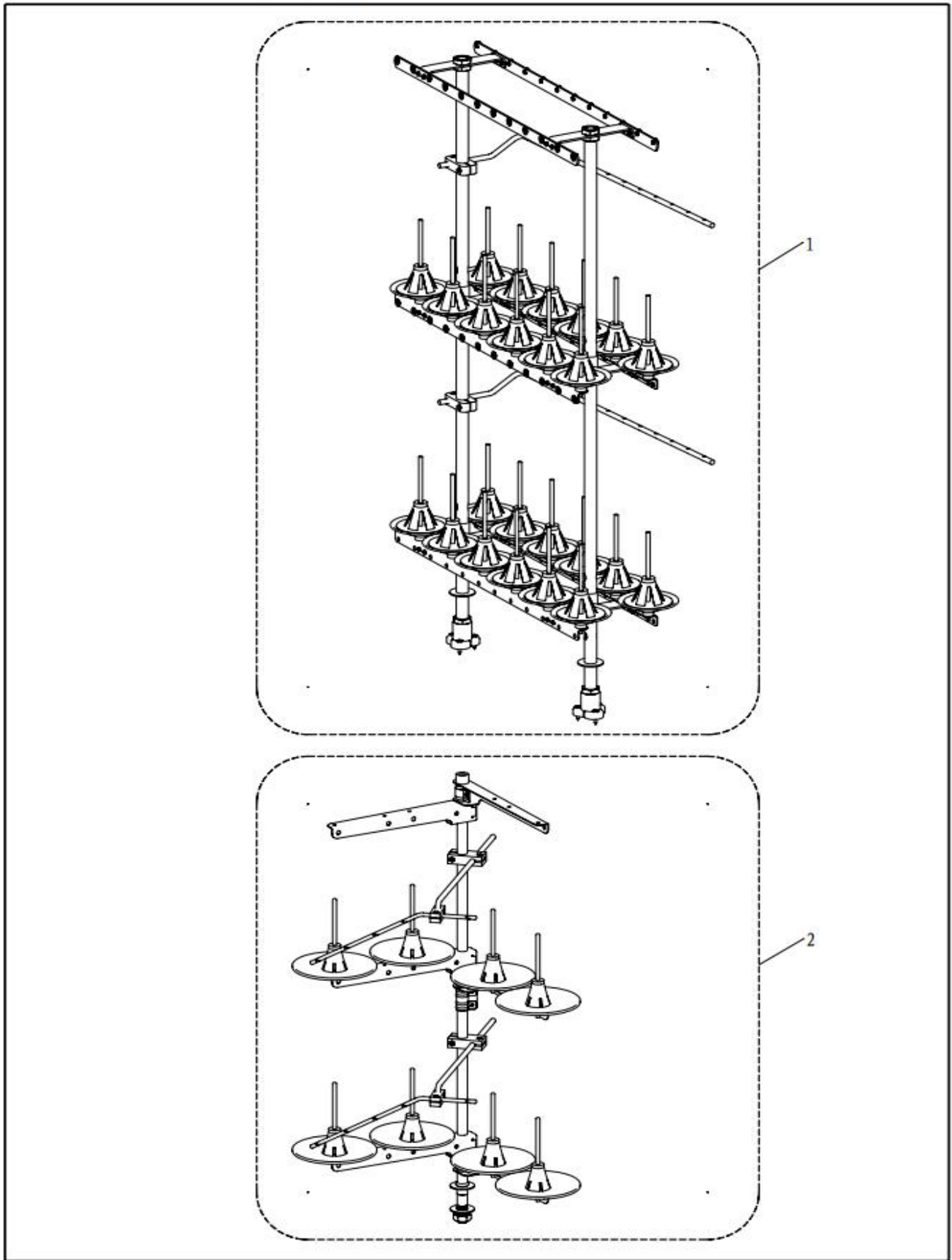
15. 夹线器部件 THREAD TENSION MECHANISM

序号	图 号	名 称	NAME OF PARTS	数量
1	331.15-01	松线气缸组件	AIR CYLINDER	1
2	331.15-02C	松线顶杆	SHAFT	1
3	01-504000724-1	内六角圆柱头螺钉 M4×7	SCREW	4
4	05-043200900-1	垫片	WASHER	4
5	331.15-06C	松线气缸架	BRACKET	1
6	331.15-03	松线顶杆限位架	BRACKET	1
7	331.15-04	过渡板	PLATE	1
8	01-505001021-1	开槽圆柱头螺钉 M5×10	SCREW	3
9	331.15-05C	夹线器组件	TENSION ASM.	1



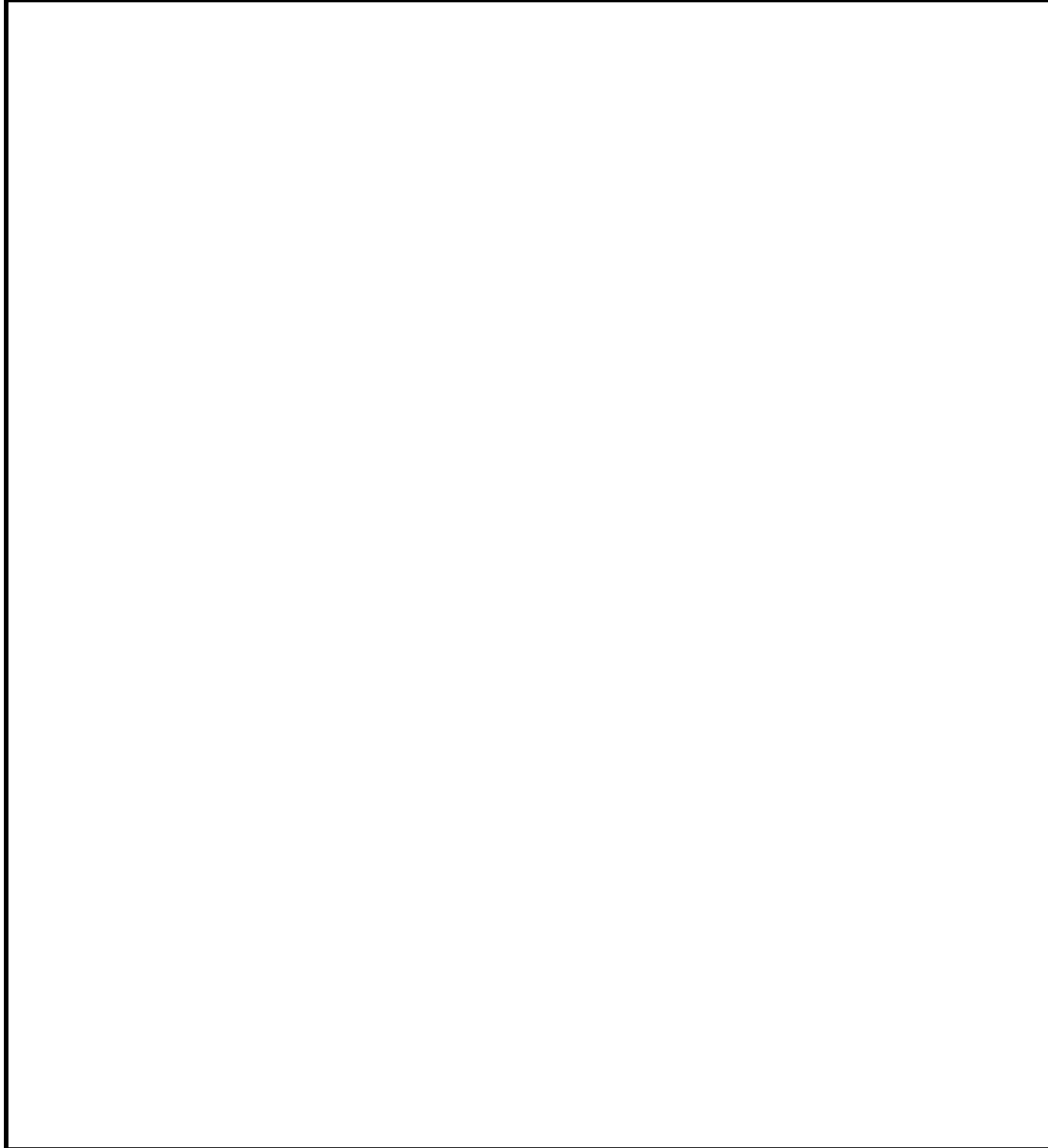
16. 润滑部件 LUBRICATION MECHANISM

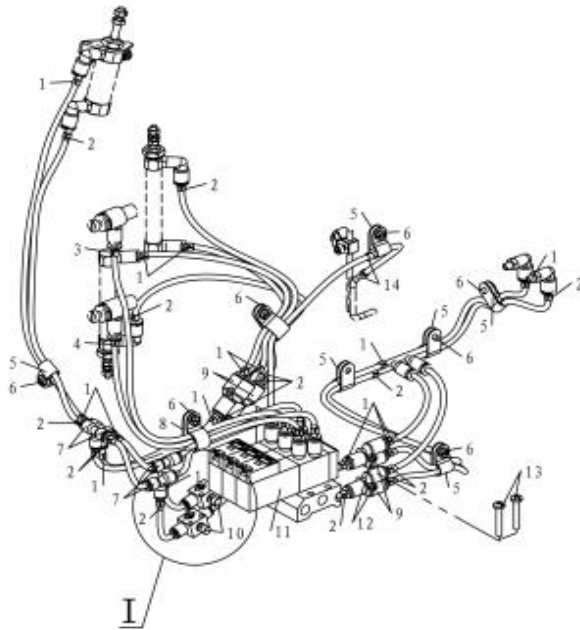
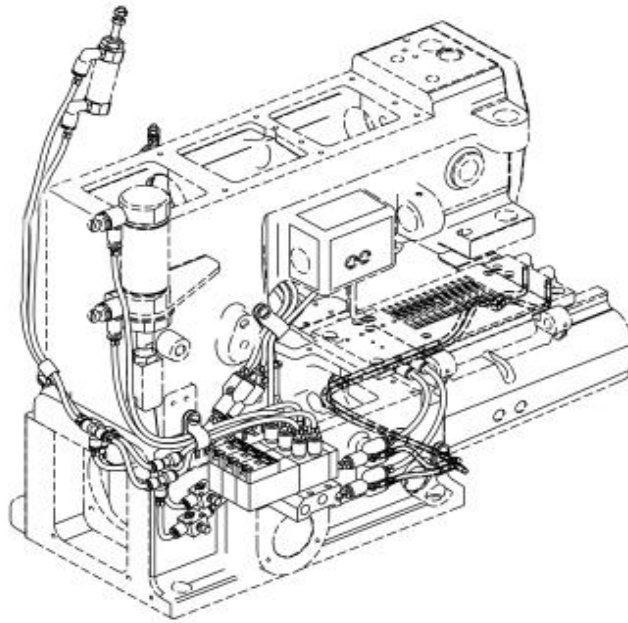
序号	图 号	名 称	NAME OF PARTS	数量
1	331.16-01	头部供油铜管	TUBE	1
2	01-804000414-1	内六角凹端紧定螺钉 M4×4	SCREW	1
3	331.16-03	油淋盘	OIL RELEASER	1
4	05-064161200-1	平垫圈6	WASHER	1
5	03-606000350-1	六角薄螺母M6	NUT	1
6	01-504000821-1	开槽盘头螺钉 M4×8	SCREW	7
7	201.20-09YGA	油管 φ4×φ6 进口	TUBE	1
8	331.16-06	上喷油嘴	JOINT	1
9	331.16-08	滤油器内螺钉	JOINT	1
10	201.14-05	滤油器	OIL FILTER	1
11	02-511401621-1	开槽圆柱头螺钉 SM11/64"×40-16	SCREW	3
12	05-043100700-1	平垫圈4	WASHER	3
13	351.17-05	滤油器盖	OIL FILTER CAP	1
14	12-390350	O型圈	O-RING	1
15	01-504000621-1	开槽圆柱头螺钉 M4×6	SCREW	1
16	331.16-07A	回油管衬套	BUSHING	1
17	331.16-11A	回油管组件	TUBE	1
18	331.16-13	底座供油管	TUBE	1
19	201.20-09YGA	油管 φ4×φ6 进口	TUBE	1
20	331.16-15	放油螺钉(短)	SCREW	2
21	201.14-10	油管接头HX6804-02	JOINT	4
22	331.16-19	放油螺钉(长)	SCREW	1
24	01-506001224-1	内六角圆柱头螺钉 M6×12	SCREW	2
25	331.16-26	油泵组件	OIL PUMP ASM.	1
26	331.16-21	油管固定架	BRACKET	1
27	331.16-20A	挡油板	PLATE	1
28	311.01-12	铜丝网	OIL FILTER SCREEN	1
29	311.01-13	锁簧	CLAMP	1



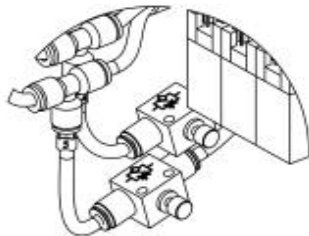
17. 线架部件 THREAD STAND

序号	图号	名称	NAME OF PARTS	数量
1	331.17-01	12针线架	THREAD FRAME	1
2	332.17-01	4针线架	THREAD FRAME	1



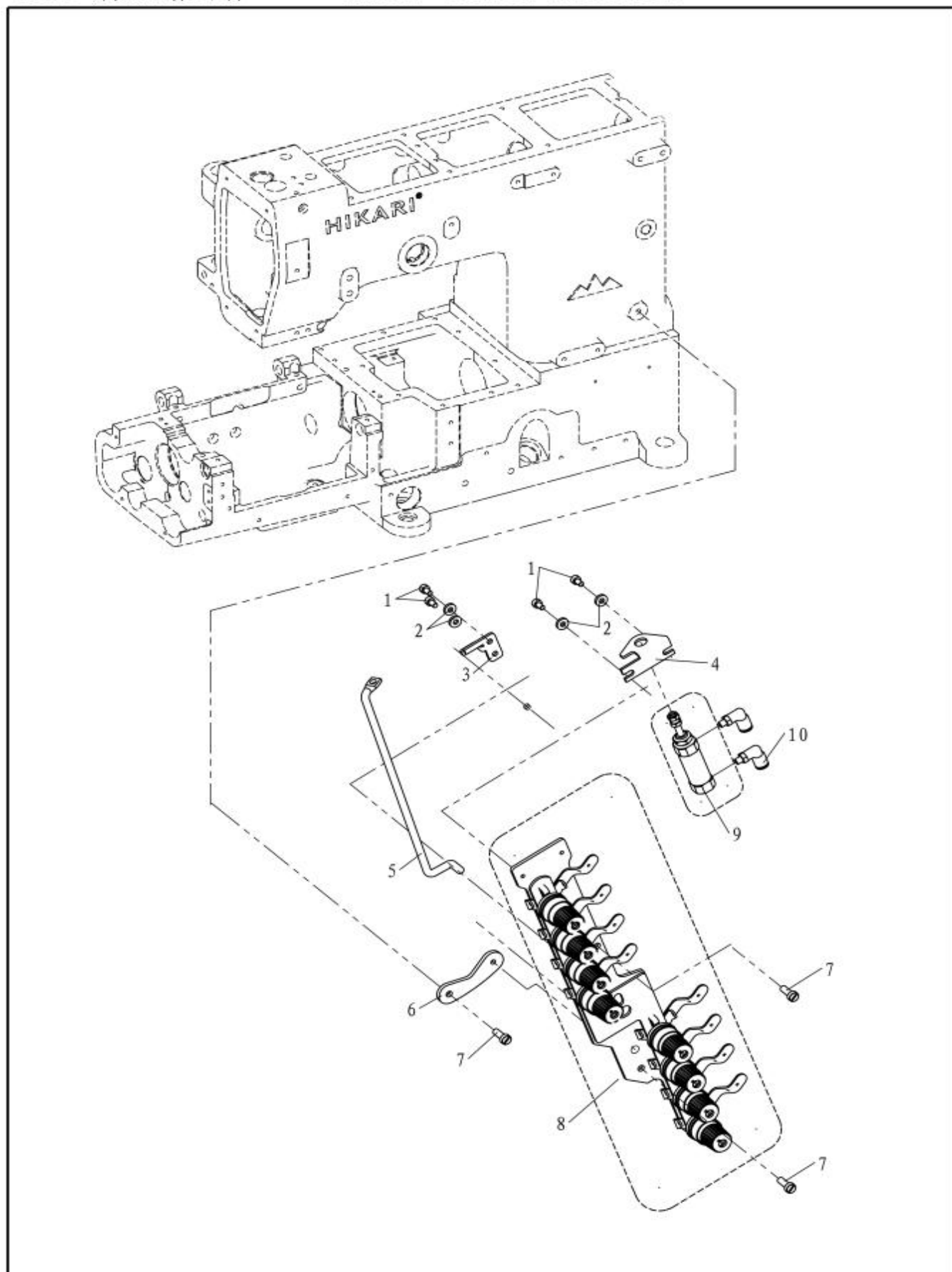


$\frac{I}{1 : 2}$



18. 气路部件 WIRING AND PIPING

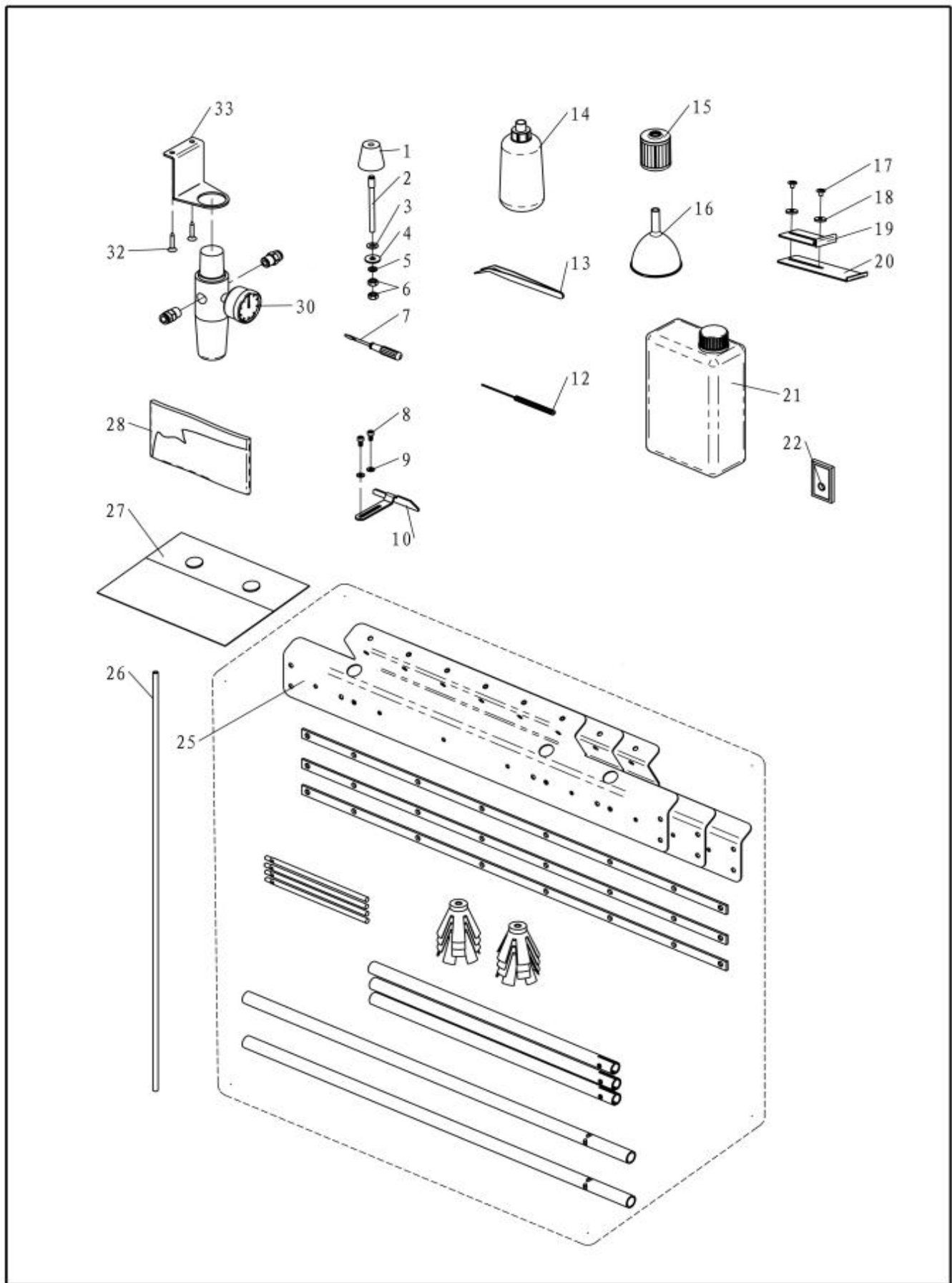
序号	图 号	名 称	NAME OF PARTS	数量
1	331.14-34	号码套管	NUMBER	16
2	331.14-35	号码套管	NUMBER	16
3	331.14-32	号码套管	NUMBER	2
4	331.14-33	号码套管	NUMBER	2
5	331.18-22	气路管夹(中)	CLAMP	6
6	01-504000821-1	开槽盘头螺钉 M4×8	SCREW	8
7	331.18-04	垂直三通接头	JOINT	4
9	331.18-15	平行三通接头	JOINT	4
10	331.18-38	节流阀	AIR VALVE	2
11	74-SY5120-5GD-01(SM	电磁阀(二位五通、直接出线)	SOLENOID VALVE	4
12	01-403001623-1	十字一字小盘头螺钉 M3×16	SCREW	2
13	01-404002523-1	十字一字槽盘头螺钉 M4×25	SCREW	2
14	331.14-31	号码套管	NUMBER	3



19. 四针夹线器部件

THREAD TENSION MECHANISM

序号	图号	名称	NAME OF PARTS	数量
1	01-504000724-1	内六角圆柱头螺钉 M4×7	SCREW	4
2	05-043200900-1	垫片	WASHER	4
3	331.15-03	松线顶杆限位架	BRACKET	1
4	331.15-06	松线气缸架	BRACKET	1
5	332.15-02A	松线顶杆	SHAFT	1
6	331.15-04	过渡板	PLATE	1
7	01-505001421-1	开槽圆柱头螺钉 M5×14	SCREW	3
8	332.15-05A	4针夹线器组件	TENSION ASM	1
9	331.15-01	松线气缸组件	AIR CYLINDER	1
10	331.18-13	L型弯头4-M5	JOINT	2



20. 附件 ACCESSORIES

序号	图号	名称	NAME OF PARTS	数量
1	331.20-01	机头防震垫	RUBBER CUSHION	4
2	351.20-01	防震垫支撑销	SCREW	4
3	05-062081301-1	垫片	WASHER	4
4	05-064161800-1	垫片	WASHER	4
5	07-0631616-1	弹性垫圈	SPRING WASHER	4
6	03-606000500-1	六角螺母M6	NUT	8
7	113.16-19	两用螺丝刀	SCREW-DRIVER (SMALL)	1
8	01-504000824-1	内六角圆柱头螺钉 M4×8	SCREW	2
9	05-043080900-1	平垫圈	WASHER	2
10	331.20-12	导布板	BRACKET	1
11	103.20-04-04	内六角扳手3	ALLEN KEY 3	1
12	201.22-07-08-16	有手柄六角扳手 (1.5)	ALLEN KEY 1.5	1
13	201.22-07-08-13	镊子	TWEZERS	1
14	103.20-50	小油壶	OILER	1
15	201.14-05	滤油器	OOIL FILTER	1
16	201.22-07-08-10	漏斗	OIL FUNNEL	1
17	01-604000521-1	一字槽大帽螺钉M4×5	SCREW	2
18	05-043201350-1	平垫圈	WASHER	2
19	331.02-01	拦料短板	SHORT ELASTICGUIDE	1
20	331.02-02	拦料长板	LONG ELASTICGUIDE	1
21	201.22-06C	大油壶HW782T (A)	OIL	1
22	331.07-10	机针U0×113GS90/14	NEEDLE	1
25	331.17-01	12针线架HW800T	THREAD STANDBOX	1
26	80-05008001-01	气管 (蓝色) Φ5XΦ8		1
27	201.22-07-08-11	附件袋	ACCESSORIES BAG	1
28	103.20-52	机头罩	HEADCOVER	1
30	HX6800-12-10-01	气压表与分水滤气器	REGULATOR	1
32	21-3501932-4	十字半沉头木螺钉	SCREW	2
33	382.07-10	气压表安装板	BRACKET	1